



PA · HOME

ONE-STOP SOLUTION

CUSTOMIZED BUILDING MATERIAL
FROM PRODUCT DESIGN TO THE INSTALLATION OF OVERSEAS PROJECTS



Wechat



Whatsapp

CONTENTS

01 CHAPTER ONE PA Brand

Company Introduction	03/08
Factory/Corporate Identity	09/10
Development History.....	11/12
Brand Positioning.....	13/14
PA Home Group.....	15/16

02 CHAPTER TWO PA Team & Service

Core Management.....	17/18
PA Team	19/20
PA Service	21/24

03 CHAPTER THREE PA Technology

Products System	25/44
High-Quality Health Panels	45/46
High-Quality Hardware System.....	47/48

04 CHAPTER FOUR PA Product

Five Major Product Matrices	49/60
Export Grade Cabinet	61/62

05 CHAPTER FIVE PA Project References

Projects In Oceania	63/70
Projects In Asia	71/78
Projects In Middle East	79/84
Projects In North America	85/98
Projects In Latin America.....	99/102
Projects In Africa	103/106
Projects In Europe	107/110
Door and Window Projects	111/118
Global Partners	119/120
Follow Us	121/122



PA HOME
COMPANY INTRODUCTION

PA Home: A Trusted Global Partner in Custom Home Solutions.

As one of China's top ten custom cabinetry brands, PA Home has been a trusted partner for developers, contractors, and luxury homeowners, providing tailored home solutions for large-scale projects and high-end residences.

Our product portfolio includes **KITCHEN CABINETS, WARDROBES, BATHROOM VANITIES, ALUMINUM DOORS AND WINDOWS, INTERIOR DOORS, AND WALL PANELS**, catering to residential, commercial, and hospitality projects.

Global Manufacturing Facilities

PA Home operates large-scale manufacturing facilities worldwide to ensure efficient.

Production and premium quality:

- Zhaoging, China: 80,000m², with an annual production capacity of 200,000 sets
- Foshan, China Headquarter: 4000m²
- Jakarta, Indonesia: 15,000m², with an annual production capacity of 20,000 sets
- Riyadh, KSA: 10,000m², with an annual production capacity of 10,000 sets
- Dubai, UAE: In order to better expand the UAE market and provide customers with more complete one-stop services, the company has built a 1,000-square-meter high-end full-system display showroom in Dragon mart, Dubai, to intuitively present the entire solution.



2009

Since 2009

80000 m²

China Intelligent Headquarters

3

overseas bases

Indonesia/Dubai UAE
Saudi Arabia

80⁺

Products are sold to 80+ countries



PA HOME

COMPANY INTRODUCTION



Zhaoqing, China
4.0 Intelligent Production Base



• Core Advantages

Smart Production System: Since 2013, we have implemented the IDPI intelligent design and production integration system, combined with ERP process management, to achieve seamless collaboration from design to production, with continuous annual upgrades.

CNC-Enabled Production Management: Our advanced CNC (Computer Numerical Control) production management system ensures precision, consistency, and efficiency in manufacturing, reducing errors and optimizing resource utilization.

Global Service Capabilities: Support for FOB/CIF/DDU/DDP trade terms, offering 2D/3D design, pre-assembly inspections, and mixed-loading services to meet diverse client needs.

High-Quality Assurance: Use of international-standard materials and hardware, combined with automated production processes, ensures high-quality products and fast delivery.

Localized Team Support: Local teams in Indonesia, Saudi Arabia, and the UAE provide comprehensive services, including measurement, installation, and after-sales support, ensuring a hassle-free customer experience.



PA HOME
**COMPANY
INTRODUCTION**



• Riyadh Marketing

PA Home's strategic expansion into Saudi Arabia takes a significant step with the launch of Nasr Al Khaleej Company, in partnership with local leader Wangkang Group. This collaboration will drive key engineering projects across the Kingdom. In its first year, Nasr Al Khaleej will establish a marketing team in Riyadh.

1. Riyadh Marketing + Production Center Overview
Factory Size & Capacity: 10,000 m² facility with an annual production capacity of 10,000 sets.
2. Showroom: 1,000 m² exhibition space showcasing kitchen cabinets, wardrobes, interior doors, aluminum doors & windows, and custom full bathroom solutions.

Jakarta, Indonesia
Intelligent Production Base



• Indonesia Factory

The Indonesia factory was established in 2019, covering 15,000m² with a monthly production capacity of 3,000 sets of cabinets. Prior to 2023, it mainly focused on exporting high-quality custom cabinets to Europe and the U.S. Since 2023, it has expanded into the local Indonesian market, quickly gaining a reputation for superior product quality.

The factory features import-level quality standards and is equipped with an industry-leading 4.0 fully automated production line, including electronic panel saws, automatic edge banding machines, and fully automated six-sided drilling machines, with an annual output of 20,000 custom cabinet sets.

The local team in Indonesia consists of over 40 professionals in production and installation, supported by a 200+ member export team in China.

In 2025, the Indonesia Marketing Center was established, featuring a 400m² standalone showroom displaying custom cabinets, aluminum doors and windows, interior doors, bathroom sets, wall panels, and more.

PA HOME GROUP



FACTORY/CORPORATE IDENTITY

AVAILABLE PROJECT SERVICES:

- Design Services
- Product Procurement
- Logistics/Quality Control
- Project Management

FACTORY IN SA

Nasr Al Khalij Industry Co., Ltd. (Saudi Arabia)

- 1. Industry 4.0 Fully Automated Production Line:** Equipped with electronic panel saws, fully automatic edge banding machines, CNC drilling machines, automatic wooden door lamination machines, and automated edge banding systems. Which is the Largest Fully Automated Production Line in Saudi Arabia.
- 2. Dedicated Service Team and Support Services:** 50+ local professionals in Saudi Arabia, supported by a 350+ member team in China.
 - 2D/3D design collaboration and production drawing confirmation.
 - Professional sales process management and follow-up.
 - Dedicated installation service team ensuring seamless product delivery.

MARKETING CENTER IN DUBAI, UAE

Jilphar PA Home General Trading LLC

- 1. Integrated Service Process - Simplified Project Management** One of the standout benefits of is our ability to provide a comprehensive service from manufacturing to installation. This means that from design, manufacturing, transportation, installation, to after-sales service.
- 2. Local Team Support - Professional Services and Efficient Communication** Our team consists of experienced professionals who can communicate seamlessly with project owners.

FACTORY IN INDONESIA

PT. PAHOME Customization Indonesia (Marketing Center)
PT. Cahaya Bangun Makmur (Indonesia)

- The advantages of Indonesia factory (exclusive for US market) :
1. We are capable of making modern European-style frameless RTA cabinets in bulk orders with reasonable prices.
 2. The advantage of working with us: we produce and ship from Indonesia and get rid of AD/CVD and it is also duty-free for importing from Indonesia.
 3. You can customize your own product line and colors for your market.
 4. We are a long-term cabinet supplier of different distributors on the West Coast. Meanwhile, we have successfully provided materials for Interior renovation projects/ Multi-Family construction/ Custom millwork projects in different states including Hawaii, Seattle Washington, LA California.
- The advantages of Indonesia factory (for Indonesia local market) :
1. Incomparable quality guaranteed in local market. Materials and hardware are imported from international suppliers in China with much more options and higher quality.
 2. Better efficiency with automatic production system from China. The delivery time is much shorter than traditional factories.
 3. Reasonable factory prices. Direct manufacturer price with no dealers or agents in the middle.
 4. Full services for projects. PA team is local language friendly and we can provide measurement, production inspection, samples, order pick up and delivery, installation, maintenance, aftersales services etc.
 5. Good reputation and references. PA team has been working with different local business for commercial and residential projects, such as offices, villas, houses, apartment homes with outstanding comment from local market.

DEVELOPMENT HISTORY

2010

"PA Kitchen" brand was established. We started using the new trademark-PA and began expanding internationally by setting up an export department with a professional sales team.

2009

Founded in 2009, Baishan was a Chinese leader in modern industrial kitchen manufacturing. Since then, we have been consistently dedicated to improving kitchens and homes worldwide.

2011

The high-end cabinet "BMW Lacquer Series" became popular in the international market and was widely loved by European and American families.

2013

The new 20,000-square-meter factory was founded, which includes cabinet body & frame and lacquer plants, a showroom, and offices. This made PA one of the largest cabinetry manufacturers in Guangdong.

2014

PA expanded its product lines and began to provide full-house solutions.

2016

With its flourishing success in overseas markets, PA set up offices in Australia, and Malaysia.

2017

A new 2,000-square-meter showroom has been finalized, showcasing our latest product range, which encompasses kitchens, wardrobes, bathrooms, home furniture, and more. With this addition, our showrooms have exceeded 400 worldwide.

2018

Expanded to a 40,000-square-meter factory, producing over 100,000 sets of kitchens, 20,000+ sets of home furniture, and 155,000+ sets of bathrooms annually.

2019

The branch manufacturing factory was set up in Jakarta, Indonesia.

2020

Despite the pandemic, we achieved a 20% increase in sales compared to 2019.

2021

PA Marketing Headquarters relocated to Building 7, Meiju IBME Center, Foshan, China.

2023

The acquisition of land was scheduled in 2022, followed by a groundbreaking ceremony in 2023. The facility is anticipated to commence production before May 2024.

2024

In 2024, PA's full system customization strategy will be elevated. This includes fully integrating branding, digital, intelligent, information, and efficiency initiatives. The company will consolidate high-end global smart manufacturing equipment and develop leading-edge production lines to fully build a powerful smart manufacturing engine. The PA kitchen brand has been upgraded to PA Home.

2025

The branch manufacturing factory was set up in Riyadh, Saudi Arabia.

BRAND POSITIONING

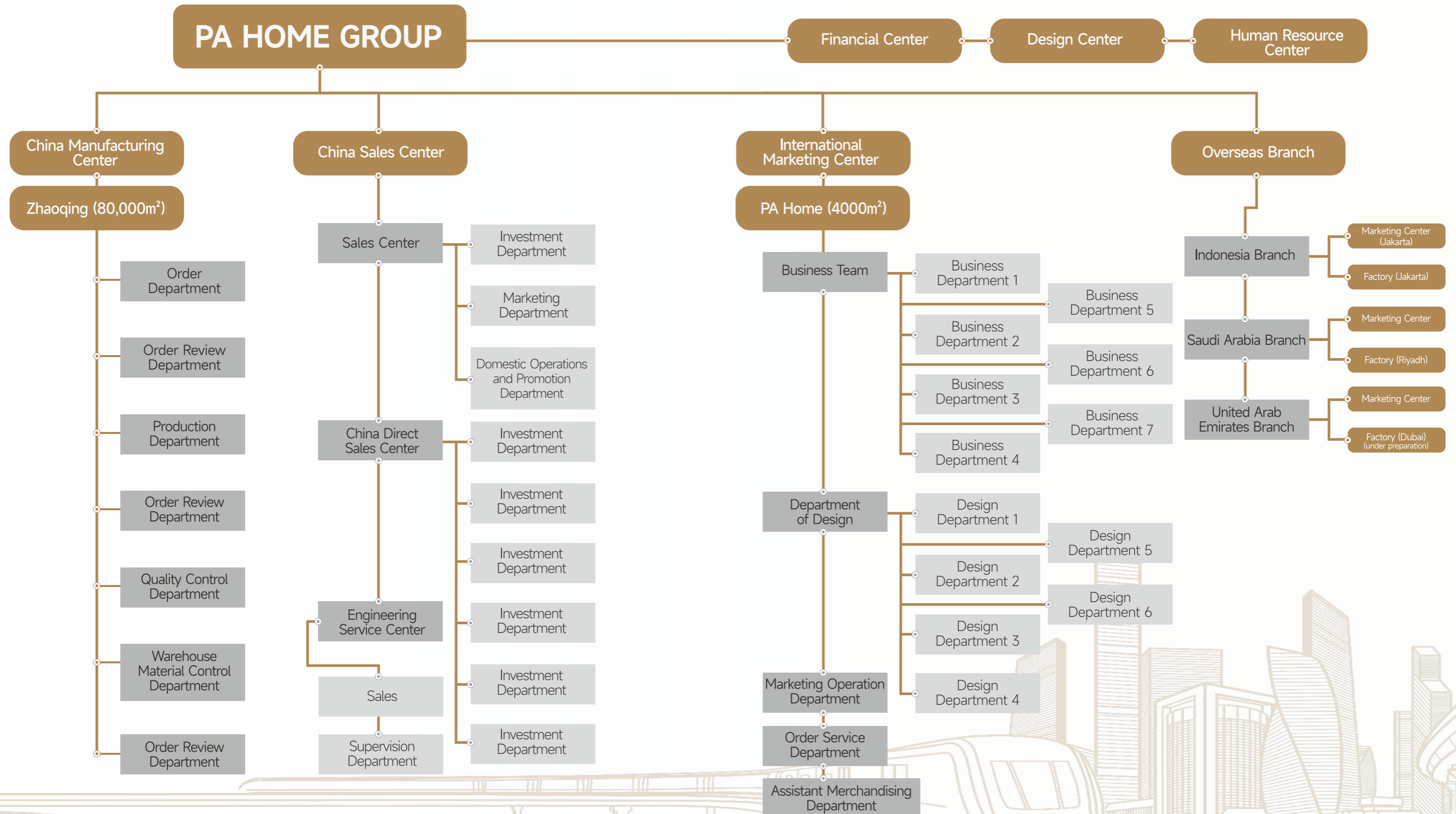
BRAND SLOGAN

- Cabinets, Windows, Doors, Full Bathroom & Wall Panels Meet International Quality Standards.
- Approved by Over 80+ Different Countries.



PA Brand house

Brand Worldview	<p>Brand Mission: Bring More Love and Comfort to Every Home</p> <p>Brand Vision: Chinese PA, World PA, Where There's Home, There's PA</p> <p>Brand Values: Passion, Focus, Responsibility, Pragmatism, Sincerity</p>
Brand Positioning	<p>Category Positioning: Export-Grade · Full System Customization</p> <p>Brand Proposition: Where There's Home, There's PA</p> <p>Brand Tone: More Fashionable · More Cozy · More Environment Friendly</p> <p>Brand Slogan: Export-Grade Cabinets, Windows, Doors, Full Bathrooms & Wall Panels Selling Well in 80+ Countries Around the World</p>
Core Value	<p>Target Groups: Essential, Upgrade, and Luxury Seekers in the Mid-to-High Consumer Bracket</p> <p>Benefit Point: Export-Quality Customization, High Aesthetics, High Quality, High Standards</p>
Trust Support	<p>Core Technology: 16 Years of Honing Our Brand Craft with Heart and Soul, Export-Grade Selling Well in 80+ Countries Around the World</p>
Product Offering	<p>Product Matrix: Cabinets, Windows, Doors, Full Bathrooms & Wall Panels</p>



CORE MANAGEMENT



Peter Yang
President

Peter Yang, the founder and president of Guangdong Baishan Furniture Co. Ltd., has 17 years of experience in the building materials and home furnishing industry. In 2003, he entered the cabinet industry as a regional manager of a well-known domestic cabinet company. In 2004, he started his own business and joined a cabinet brand. After years of accumulated experience, in 2008, he officially established Guangdong Baishan Home Furniture Co., Ltd. and its home furnishing brand PA KITCHEN in the capital of building materials. With a keen and cutting-edge vision, he has insight into the pain points of the industry, analyzed the needs of end customers, addressed the operational barriers of terminal stores, and formulated efficient solutions. After founding Baishan Furniture, he initiated comprehensive upgrades in products, production, management, service, etc., and is committed to making PA KITCHEN a leading home furnishing brand in China. In addition, he pays particular attention to overseas markets and has established deep cooperation abroad, becoming a standout in the field of custom furniture.

May Zhu
General Manager



Co-owner of PA Home, Director and Director of PA Kitchen Overseas Business Department, President of Building Material Supplier Alliance, Founding Member of International Trading Heroes Club. She spent more than 16 years immersed in the international building materials trading business and developed a unique approach to successful management and sales skills. She is well-known as a motivated entrepreneur with a proven track record of extraordinary achievements in building a sales team from a simple idea to annual multimillion-dollar sales.

Victor Li
Domestic Dep. General Manager
KSA District Sales and Marketing
Director



In 2010, joined PA kitchen. He have gained a deeper understanding of the overall market operation, channel construction, franchise store operation and other fields brand market operation, channel development, brand strategic planning and implementation strategy, the success of the product listing sales, to create efficient and stable sales team.

Jianhua Liu
Production Manager



In 2003, he was an enterprise installation team leader. In 2005, he moved into enterprise production management. In 2008, he joined PA Kitchen and was in charge of the manufacturing department. He has unique insights into production management, product research and development, core technology, and processes. He has won the honor of "Outstanding Manager of China Home Building Materials Industry."



PA TEAM

TEAM STRENGTH

350+ PA The team, take meticulous works in the sales, design, production, research and development, installation for one-stop services, we always set high standards for ourselves, to achieve surpassing and breakthrough, in each project sales performance ranks the top of the company;

With our positive and optimistic attitude, we respond to the challenges of the market and win customers and markets with our excellent business skills and consistent intimate services



PA HOME GROUP

FACTORY/CORPORATE IDENTITY

EXPORTING SALES TEAM



PA SERVICE

WHAT CAN WE DO FOR YOU



1. Easy to Get an Idea:

- We provide precise cost estimation based on your drawings/requests.
- We can provide similar project cases for reference.

2. Get the Right Solution for Your Project:

- We clearly understand your needs and provide appropriate solutions based on your project information.
- We fully understand design requests from different regions.

3. Design Support and Project Advice:

- We quickly understand your requests and communicate effectively.
- We provide detailed 2D drawings and 3D renderings using leading software.
- We offer advice and consulting services on project proposals with case experience.
- We can adjust materials/designs/proposals based on your project budget.

4. Reduce Your Time Cost:

- We provide advice on better designs for the most reasonable solutions.
- We foresee potential issues and make smart adjustments to reduce mistakes on-site.
- We offer instant communication with quick, real-time responses.
- We provide project bidding documents, samples, and tools to finalize orders.

5. Speed Up the Progress of Order Communication:

- We offer on-site measurements if the project requires it.
- We conduct factory or production inspections online or in person.

6. Ensure Order Production Accuracy:

- We ensure that orders are produced exactly according to engineer drawings, reducing mistakes to save costs and time at the site.
- We fully understand design requests from different regions.

7. Ensure Spare Parts and Quality Checks:

- Our PA team provides an appropriate amount of spare items for project site replacements.
- We can provide online QC inspections.

8. Simplify Packing and Installation:

- We offer both flat packing and assembly packing.
- We provide a clear packing list to identify products with each delivery and prepare necessary shipping documents, along with an installation guide that includes assembly drawings, on-site assembly instructions, videos, or the Assembling App.



PA SERVICE

ORDER PROCESS



PRODUCTS SYSTEM

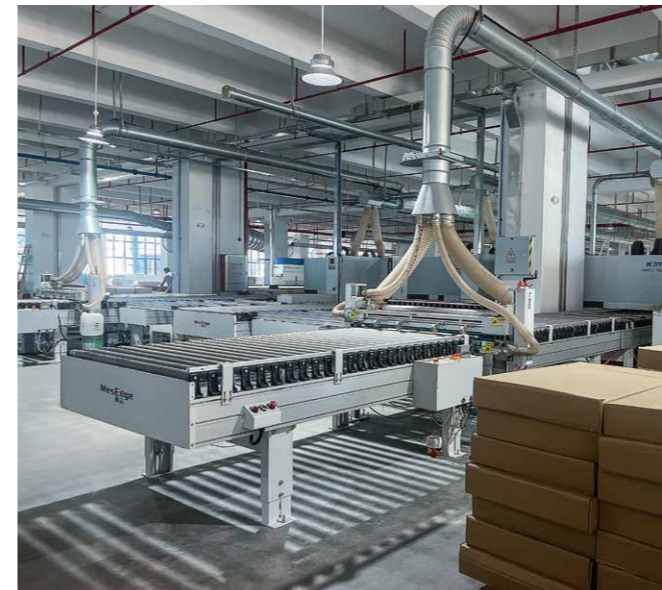
QUALITY CONTROLLING SYSTEM



The biggest challenge for customization is quality control. Since each job is customized, whenever mistakes like wrong holes, missing pieces, unclear labels, misleading drawings happen, the progress of installation at site will be messed and delayed, and eventually damage the schedule of inspection and completion. In order to get rid of the problems at site, PA has been persisting on removing the mistakes from the beginning, which is making sure the quality during production. To get the full solution to control the quality of every procedure. This is an efficient network that integrates every step and stage in the production, ensuring workflow smoothly and seamlessly.

In addition, the PA quality control system is divided into four parts as follows:

1. Homag production devices from Germany are brought in to ensure precision in manufacturing.
2. The IDPI system is an intelligent and automatic system that reduces the error rate by involving less manual labor.
3. The ERP system manages all steps from sales order confirmation to order fulfillment, making the order status visible and traceable throughout the process.
4. High-standard and strict inspection protocols for supply chain products ensure the final quality of finished products by PA.



PRODUCTS SYSTEM

INTELLIGENT DESIGN AND PRODUCTION INTEGRATED SYSTEM

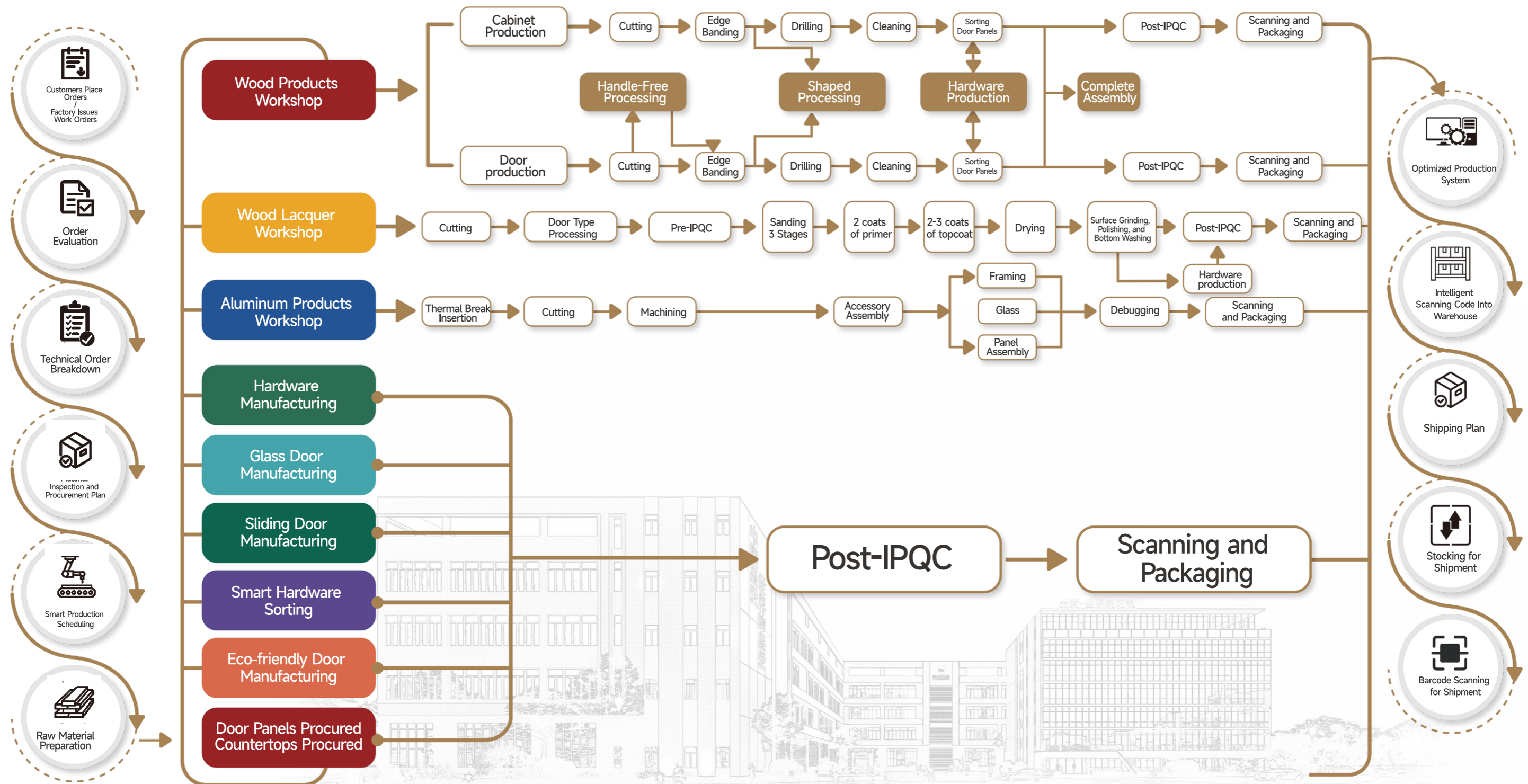


We spent more than millions to develop the Intelligent Design and Production Intergrated System (IDPI system), which integrates design, production, and quality control. The data from order, design, and production can be shared and used in one system:

- Designer uploads the design drawing data package to the system.
- The system automatically translates the drawing data into production data and sends it to each step of production. In this way, no human work is involved in the data analysis step, reducing mistakes made by humans.
- Every panel gets its own QR code. Workers only need to scan the QR code, and the machines will automatically follow the instructions to produce accordingly. There is no need for workers to manage the directions. During the sorting and packing steps, workers only need to scan the QR code again, and the system will promptly ensure that the sorting is correct, making sure every panel for the whole project is included.

This system can significantly reduce the labor involvement and human errors. (The record we had shows that the error rate is less than **0.1%** now instead of **5%** before because of this advanced system).

INTELLIGENT MANUFACTURING PROCESS FLOWCHART





PRODUCTS SYSTEM
IDPI SYSTEM

1. Smart Cutting

Cutting panels is the first step in production. The production data are transferred to each machine's computer by the IDPI system. Workers only need to choose the task on the screen and follow the instructions. There is no need to think about how to cut, which ensures the accuracy of the cutting.

2. Edge Banding

After cutting, a label is printed for each panel, marking the data on it. Workers only need to scan the QR code in the following production steps, as it plays an important role.

3. Intelligent Drilling

The accuracy of holes is crucial for assembly. Any tiny mistake will cause major issues for the installation on-site, leading to delays and added costs. At PA, the only job our workers need to do for drilling is to scan the QR code on each panel. Then, the computer will display the hole location, which is translated from the IDPI system. Workers then follow the instructions to place the panel in the correct direction into the machine, and the hole will be drilled automatically. If any mistakes occur during the cutting process, the system will recognize them. For example, when you place the panel inside, if the size doesn't match the system data, the system will notify and alert the worker to check.



PRODUCTS SYSTEM
IDPI SYSTEM

4. Smart Sorting & Inspecting

The PA intelligent sorting system receives and identifies signal data and locates materials in different channels. The computer analyzes the data and checks the accuracy. The screen will show both the number of pieces present and those that are absent. It can prevent orders from proceeding with missing pieces, ensuring the entire order is correct. This is extremely important for the installation workers on-site. Sorting is the first step for QC.

5. Quality Inspection Procedure

After Smart Sorting, PA will conduct secure quality inspections. During this process, our skilled masters will cross-check the drawing again. Attention is paid to details like panel measurements, edge banding, panel color, drill positions, etc., which will be significant in avoiding mistakes and ensuring that our clients receive the correct items before packing. Vacuuming and cleaning will also be done during this process to keep the items dust-free when you unwrap PA products. PA conducts quality inspections on product details to reduce errors for customers.



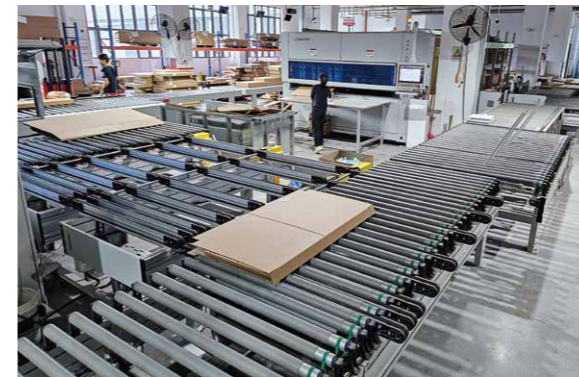
PRODUCTS SYSTEM
IDPI SYSTEM

6. Packing

Over the past decades, PA HOME has been dedicated to providing safe and secure packaging for overseas delivery. With the help of the IDPI system, PA is able to scan each panel's QR code before packing to ensure all panels are accounted for and none are missing.

Additionally, the system can detect the correct panel that belongs to the matching order, ensuring our clients receive exactly what they ordered after a long wait for delivery.

Every panel will be scanned to ensure the correct quantity. Scanning the QR code will generate all the information for each panel in the computer system, ensuring that all panels belong to the correct order. This is significant in avoiding mistakes such as missing pieces or mixing up panels from different orders, etc.



6.1.

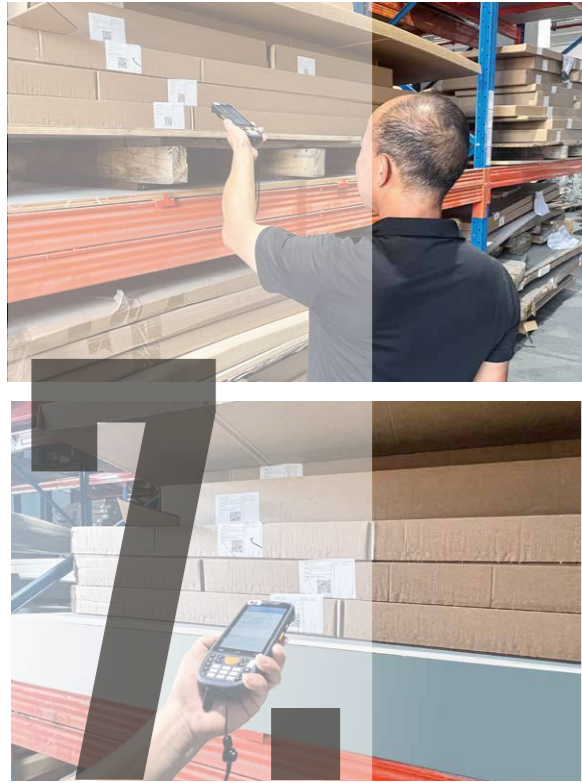
Advanced Automatic Packaging System

PA HOME has implemented a state-of-the-art automatic packaging line that utilizes advanced technology to streamline the packaging process. The system allows the machine to automatically pull and position protective paper over each product, ensuring seamless coverage. This process, combined with foam inserts and reinforced corner protectors, significantly reduces the risk of damage. By scanning each panel's unique QR code, our automated system verifies the inclusion of every part before securely sealing the package, offering superior protection during transit while optimizing efficiency and accuracy.

6.2.

Assembling Packing

PA HOME provides a secure pre-assembled packing service to customers who need it. We assemble the cabinet and wrap it with thick paper along its shape. We also add eight paper corners to protect it from damage. After the basic packing, we cover it with several layers of waterproof PVC film. This helps prevent the cabinet from getting wet.



7.

Warehouse Storage

Effective inventory management showcases PA HOME's high-quality warehousing and powerful equipment. PA HOME has a well-organized warehouse system to keep everything in order. The following pages will explain how we use the IDPI system to manage the warehouse.

After production, we move all packages to the warehouse. The PA warehouse keeper scans the QR code on each package to check the quantity. This helps our clients avoid problems like missing packages and saves both time and money. After checking, we place the packages on the shelves. Each order has a QR code to show its location. This helps us track the orders accurately and ensures the clients receive the correct items.

In the warehouse, PA prepares weight and volume estimates for delivery. Documentary labels are placed on each package for easy identification. The warehouse keeper calculates and checks the quantity and labels again before removing the Chinese labels and keeping only the English ones. Three days before loading, the keeper scans and unloads the packages in the loading area to speed up the process.



PRODUCTS SYSTEM IDPI SYSTEM

8.

Hardware Sorting System

Workers here scan the QR code, and the system will display the types and quantities of each piece of hardware, lighting up the corresponding items on the screen. They then pick up the hardware accordingly and place it on the table for a final scan and photograph for verification. The ERP system records all the original package data to ensure everything is correct and traceable. We can easily track it. No items are missed or incorrectly picked because all the data come from the IDPI system, with no manual interruption.





PRODUCTS SYSTEM
**WINDOW & DOOR
PRODUCTION SYSTEM**



Production Process

Firstly, choose high-quality aluminum alloy profiles, and then use precision cutting machines to cut the profiles to the required lengths based on design specifications. Next, perform machining processes such as drilling and milling to create holes for hinges, locks, and other fittings. After that, assemble the cut and machined profiles using connectors, screws, and other joining methods, while also installing reinforcing materials if needed for added strength. Subsequently, apply weather stripping and seals to ensure energy efficiency and prevent water ingress. Then, insert glass panels according to design specifications, ensuring proper sealing and insulation. Finally, conduct a final assembly of all components, including hardware like handles and locks.

Inspection Process

PA home checks the quality and specifications of aluminum profiles and other materials upon arrival, and then monitor production stages for accuracy in cutting, machining, and assembly. After that, measure finished products to confirm they meet specified dimensions and tolerances. Next, test the operation of doors and windows, including opening and closing mechanisms as well as locking functions. The final product is then thoroughly inspected for any defects or inconsistencies, and the overall appearance is ensured to meet quality standards. After the basic packing, inspect packaging to ensure that products are protected for transportation and delivery.

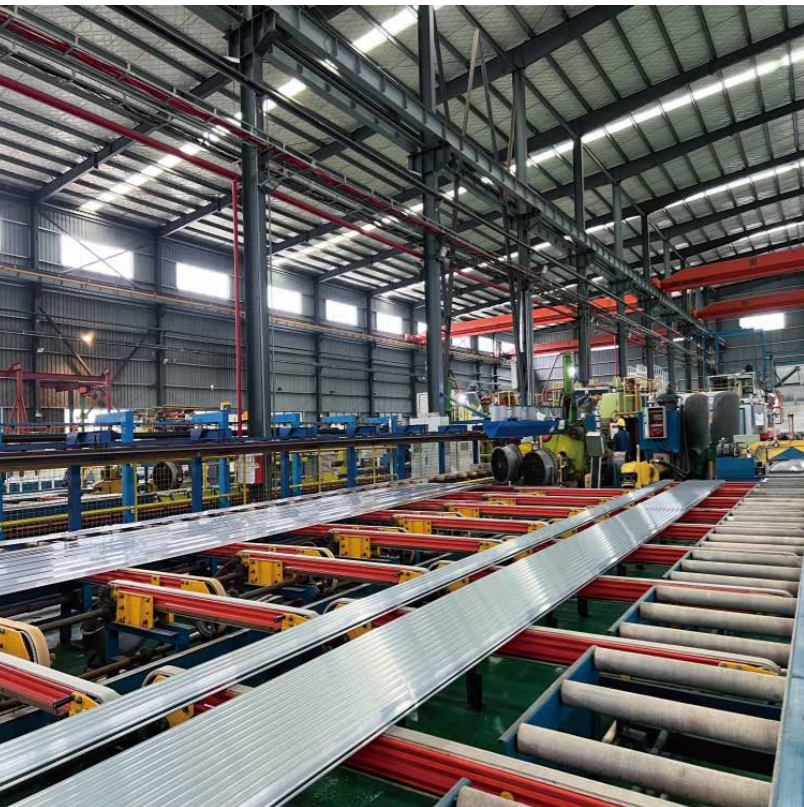
PRODUCTS SYSTEM

WINDOW & DOOR PRODUCTION SYSTEM

1.

Aluminum Window and Door Profile Strut and Cutting Production Line

Our aluminum window and door profile strut and cutting production line is equipped with fully automated cutting machinery to ensure precise accuracy with no defects. These machines also allow for more customized options to meet different client needs. The entire system of window and door accessories covers the full production and assembly process, with stringent quality control at every stage. This maximizes customer benefit by ensuring all products meet high-quality standards.





2. Hardware Debugging Area in the Window and Door Production Line

Our window and door production line includes a dedicated hardware debugging area. Each product is automatically assigned by the ERP system and cut by machine equipment to meet customization requirements. Fully automated machinery ensures production efficiency is above industry averages. This allows us to efficiently meet customers' personalized needs while maintaining consistency and high-quality standards in every product.



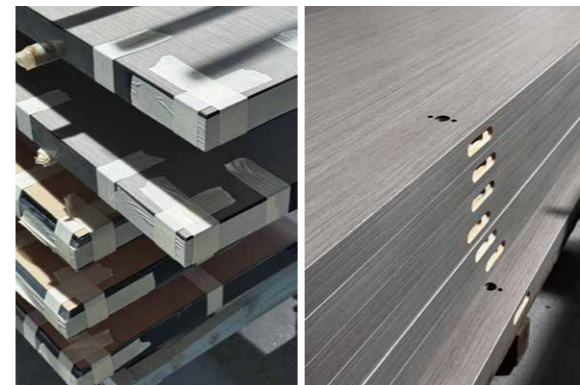
3. Window and Door Profile Stock

We offer a wide range of window and door profile stock, ensuring timely product availability. In addition, our hardware and accessory inventory is well-stocked, ensuring on-time delivery of orders and meeting all customer demands.



4. Window and Door Debugging Area

Each window and door product undergoes rigorous pre-shipment trial assembly and adjustment. This includes size verification, operational tests of the opening function, and waterproof and windproof performance testing. This ensures that every product delivered to the customer has passed stringent quality checks and is ready for immediate installation.



5. Fully Automated Production Line for Interior Doors

Our interior doors are produced on a fully automated production line, with a daily production capacity of hundreds of units. The entire system is controlled by the ERP system to ensure precise production, with zero tolerance for errors. Every door goes through rigorous quality control during the production process, ensuring both efficiency and high-quality standards.



时尚魅力源自艺术品，激发主人内心与空间共鸣，
带来唯美奢华的生活享受。
Fashionable and charming artworks that radiate the host's spirit and taste level,
Bringing aesthetic and luxurious life enjoyment.

HIGH-QUALITY HEALTH PANELS

CORE MATERIAL SYSTEM



AS/NZS 1859.1:2017



ASTM



EN



EPA



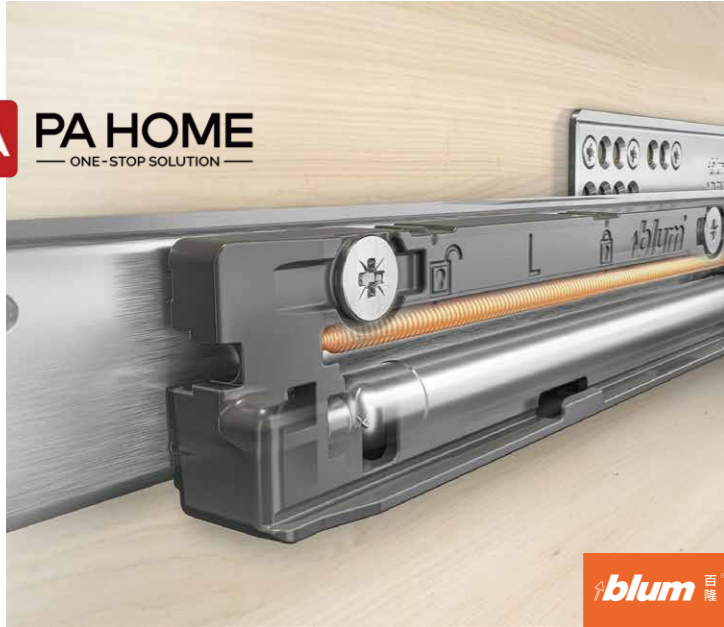
CARB



E1

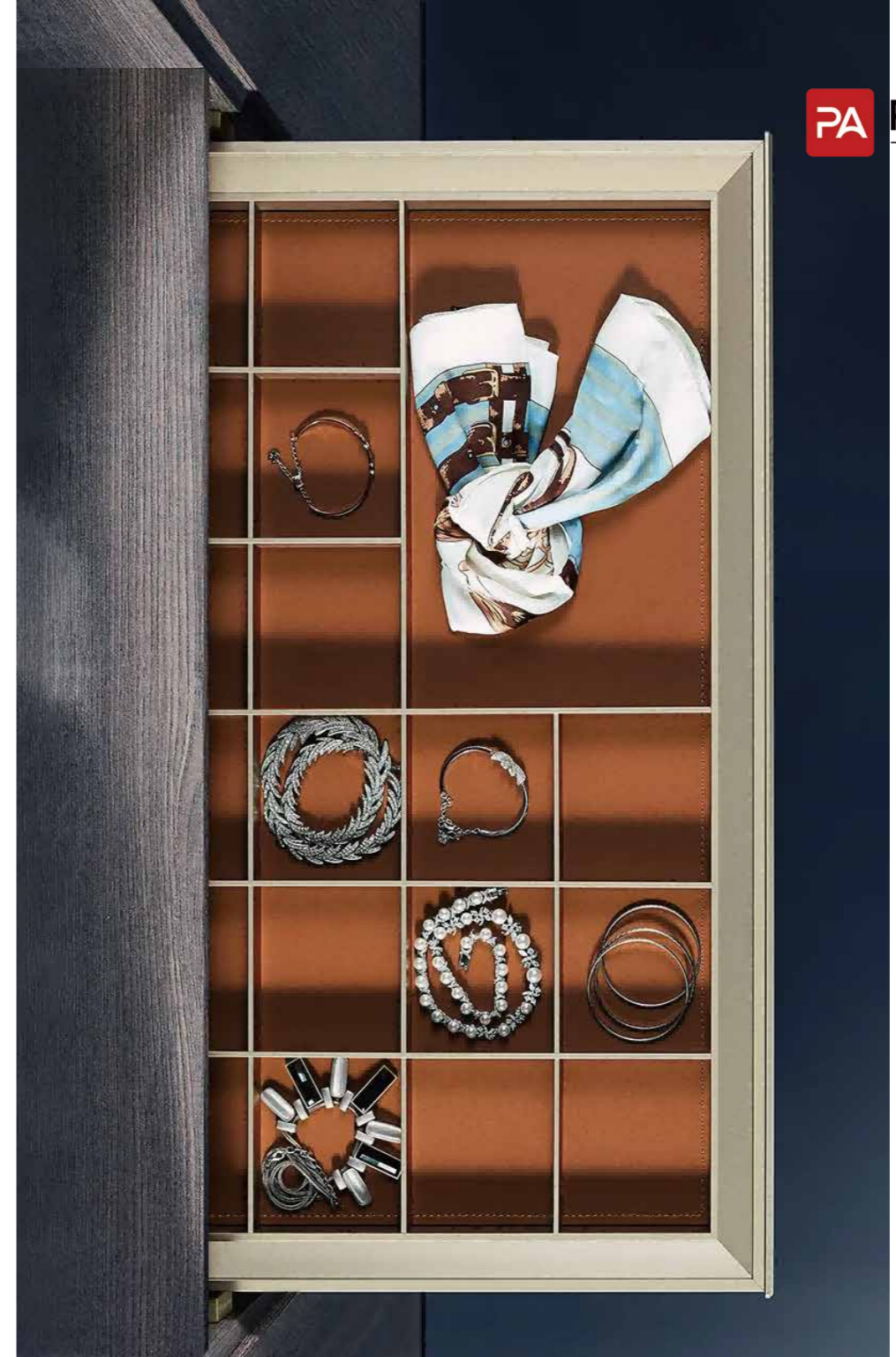


E0



High-Quality Hardware System

HARDWARE SYSTEM



- Blum
- Hettich
- DTC
- Nuomi
- Higold

PA leverages its resource integration advantages, expands its supply chain, actively seeks strategic cooperation with global top material suppliers, optimizes its processes, and ensures quality in every aspect, from materials to accessories.

FIVE MAJOR PRODUCT MATRICES

INTEGRATED CABINETS WINDOWS DOORS FULL BATHROOM & WALL PANELS

5-Systems, 6-Major Styles, 9-Spaces, 1-Solution



Efficient



Cost-effective



Highly Secure



FIVE MAJOR PRODUCT MATRICES

CABINET SYSTEMS

As people's needs become increasingly diversified and personalized, PA has been constantly innovating in the colors and styles of cabinets through in-depth insights and research into the population, designing ideal living spaces.



- Kitchen Cabinet
- Wardrobe



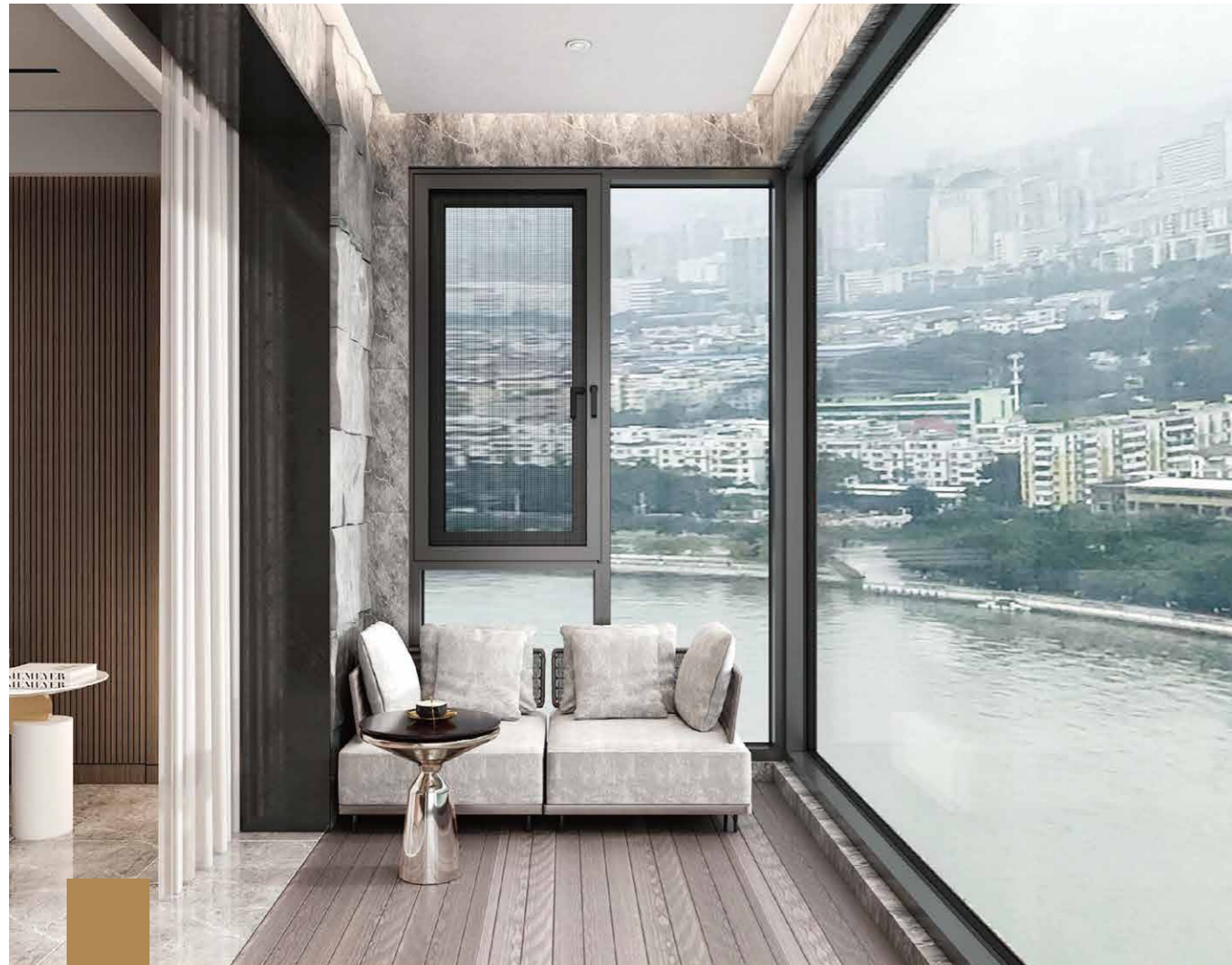
- Bathroom Cabinet
- Dining Cabinet



- TV Cabinet
- Wine Cabinet



- Bookshelf Cabinet
- Entry Cabinet
- Balcony Cabinet



FIVE MAJOR PRODUCT MATRICES
WINDOW SYSTEMS

PA window systems are stylish and versatile, offering a wide range of comprehensive quality to meet the needs of different customer groups. We provide customized high-end window systems for the entire house, ushering in the era of high-end aesthetic customization for the entire living space.



- Casement Window System
- Inward Casement Window System



- Sliding Window System
- Sliding Door System



- Casement Door System
- Folding Door System



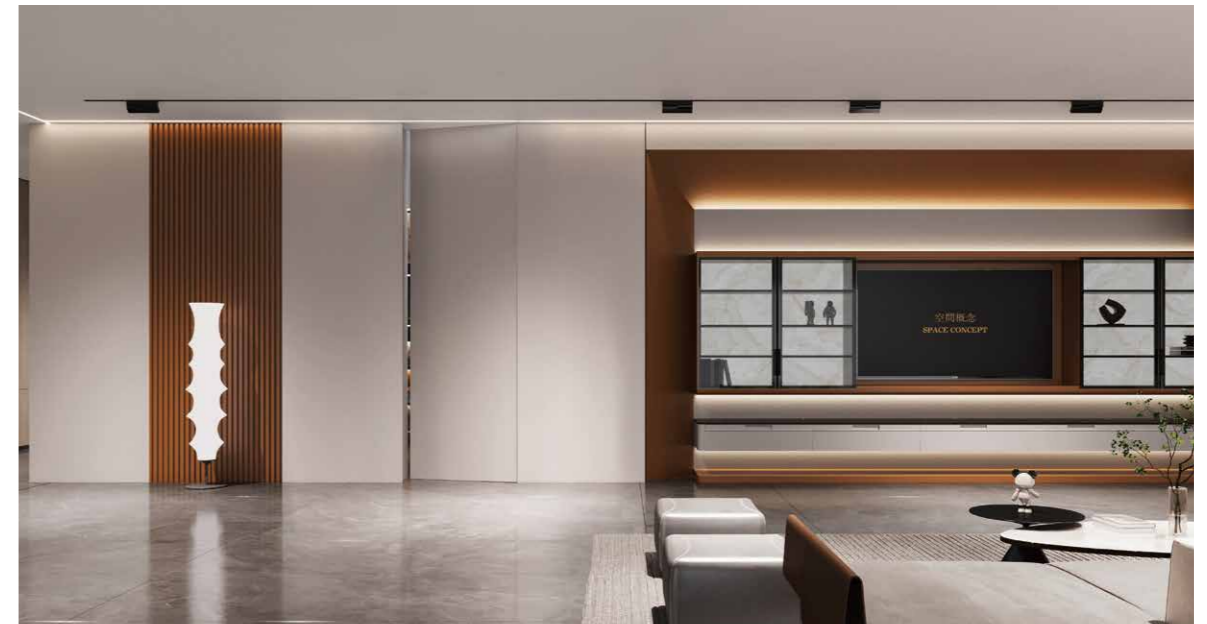
- Sunlight Room
- Skylight



FIVE MAJOR PRODUCT MATRICES
DOOR SYSTEMS

- Invisible Door System
- Partition Door System
- Eco Door System
- Bathroom Door System

PA door system customization solutions are suitable for the 5 major spaces in the home: kitchen, balcony, bathroom, study, and wardrobe spaces. They help to balance the sense of spatial boundaries, create new space layouts, increase flexibility, and extend the functionality of the home.





FIVE MAJOR PRODUCT MATRICES

FULL BATHROOM SYSTEMS

PA bathroom system respects the differences of each space and pays close attention to the preferences and habits of the space owner. Through modular customization, it can meet different spatial needs while also fulfilling the personalized needs of consumers.



- Vanity Cabinet
- Shower Enclosure Bathroom



- Glass Shower Partition
- Faucet Accessories



- Wash Basin
- Bathtub



- Toilet
- Bathroom Fixture



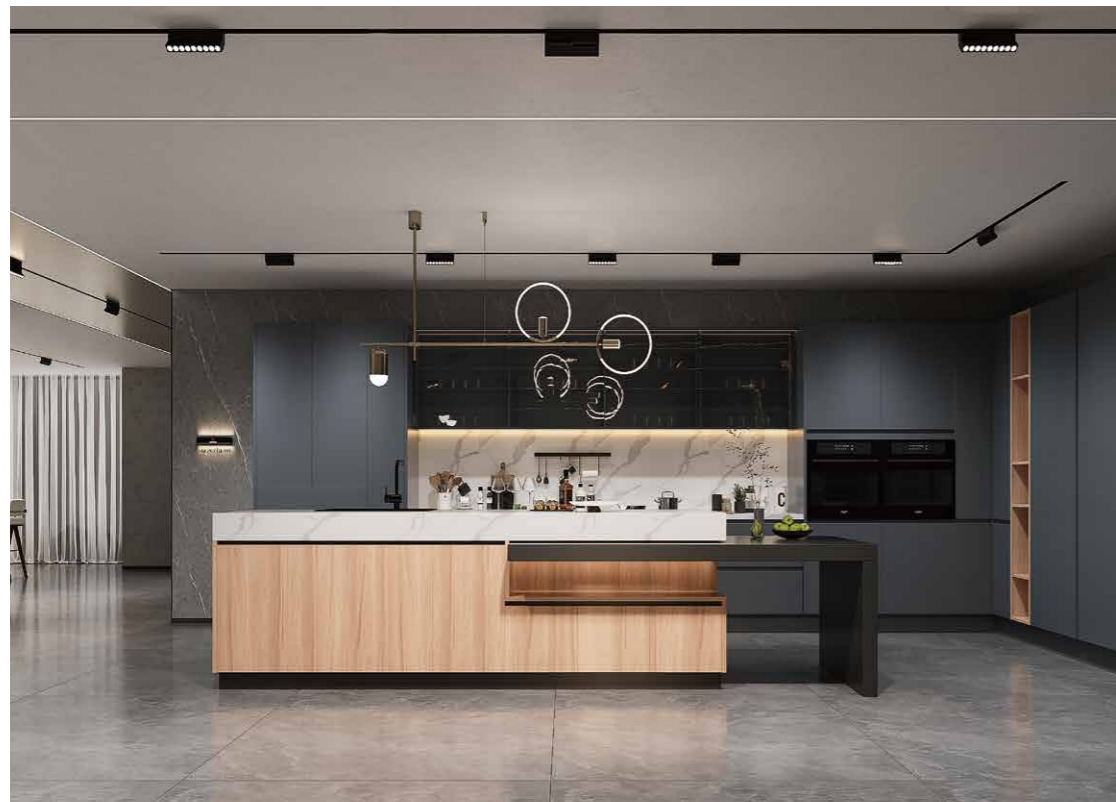
FIVE MAJOR PRODUCT MATRICES

WALL PANELS SYSTEMS

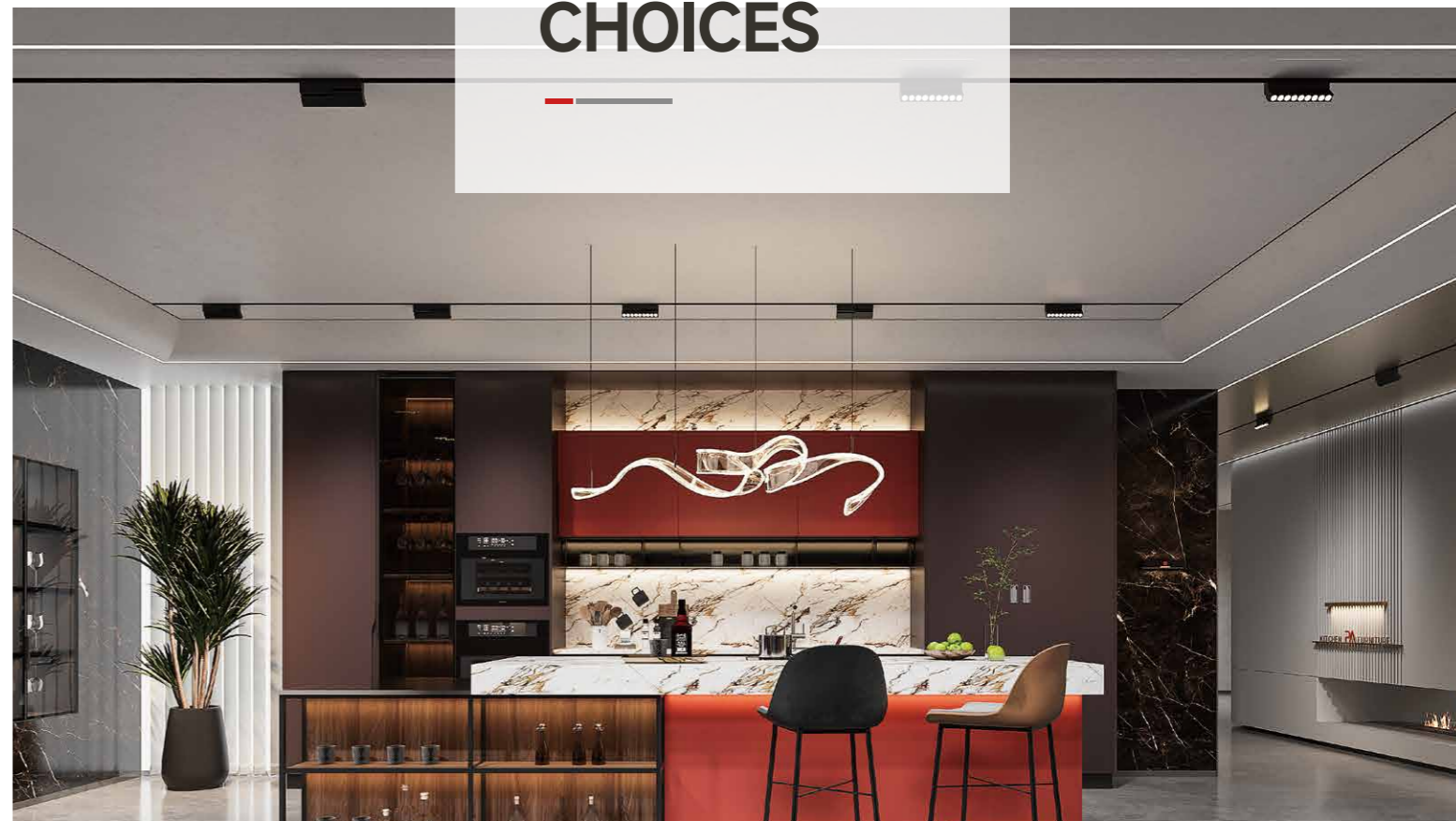
- Hall Wall Panel
- Dining Wall Panel
- Bedroom Wall Panel
- Living Room Wall Panel
- Aisle Wall Panel

PA wall panels are characterized by health and environmental protection, safety and peace of mind, fashion and beauty, easy installation, and mildew and moisture resistance. They are widely used in multiple spaces in the home, such as the hallway, living room, dining room, corridor, and bedroom. They truly achieve a single style connecting all spaces, making the home more beautiful and complete.





EXPORT GRADE CABINET
**DESIGNER'S
CHOICES**

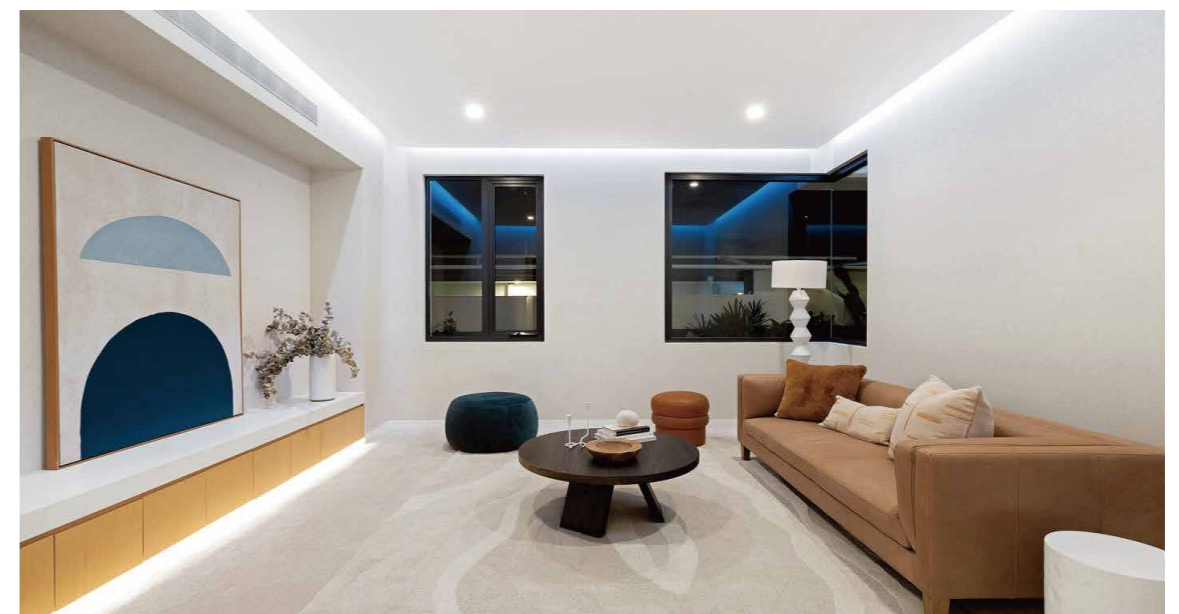
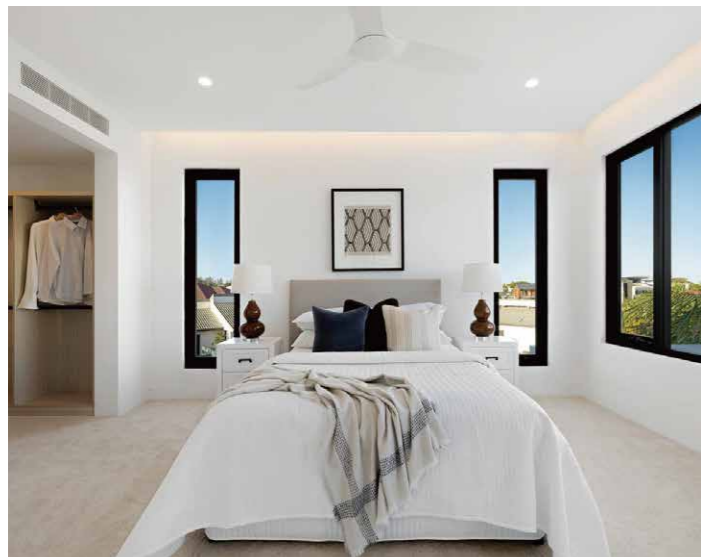
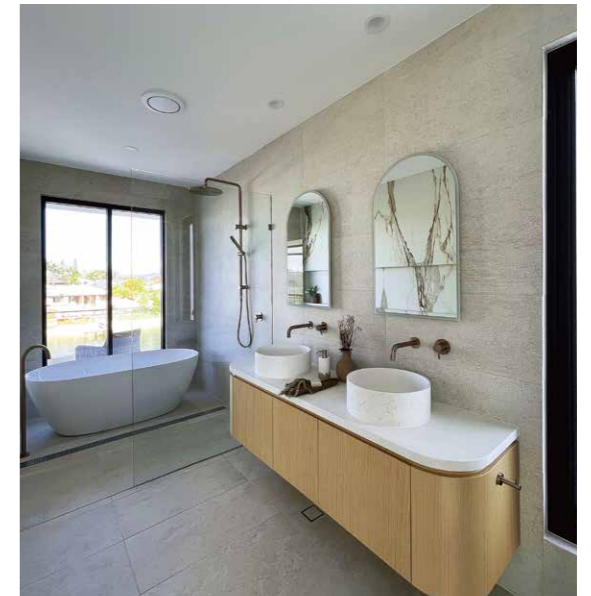




PROJECTS REFERENCES

PROJECTS IN OCEANIA

- Location
Australia
- Year
2024





PROJECTS REFERENCES
PROJECTS IN OCEANIA

- Location
Sydney, Australia
- Year
2023

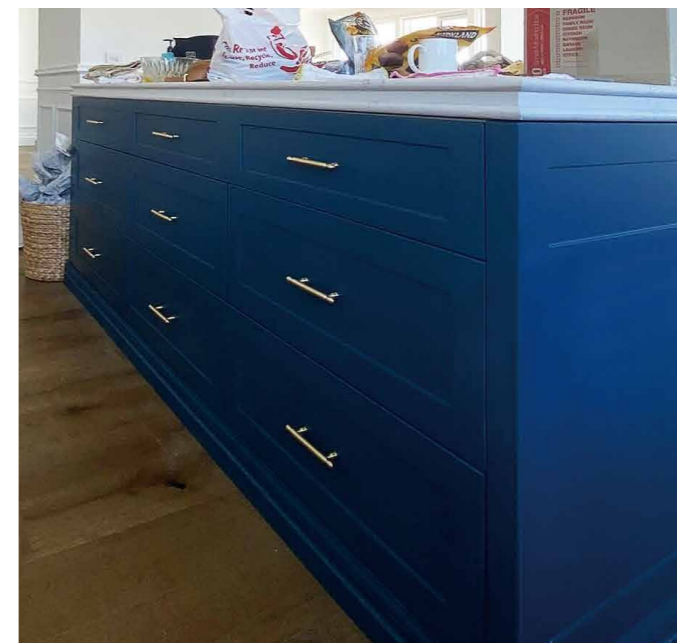




PROJECTS REFERENCES

PROJECTS IN OCEANIA

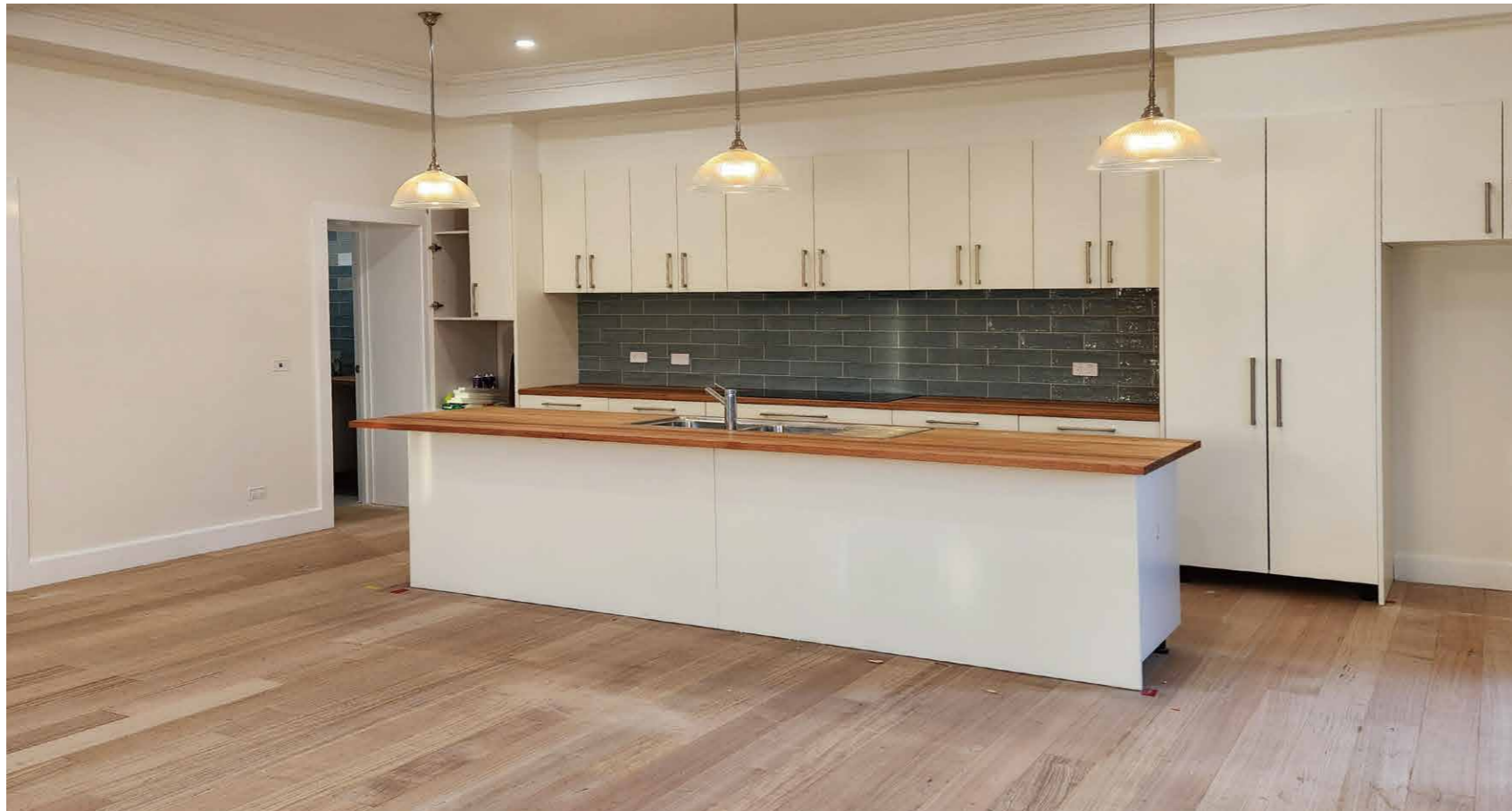
- Location
Melbourne, Australia
- Year
2023

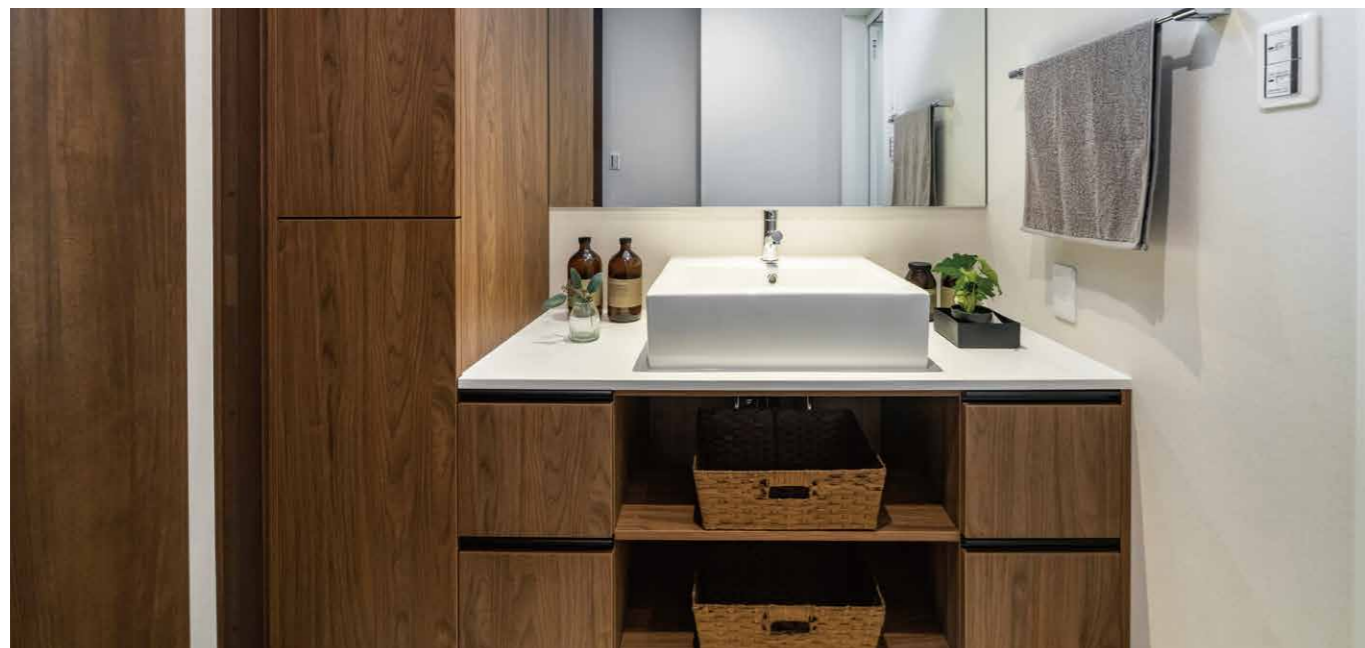
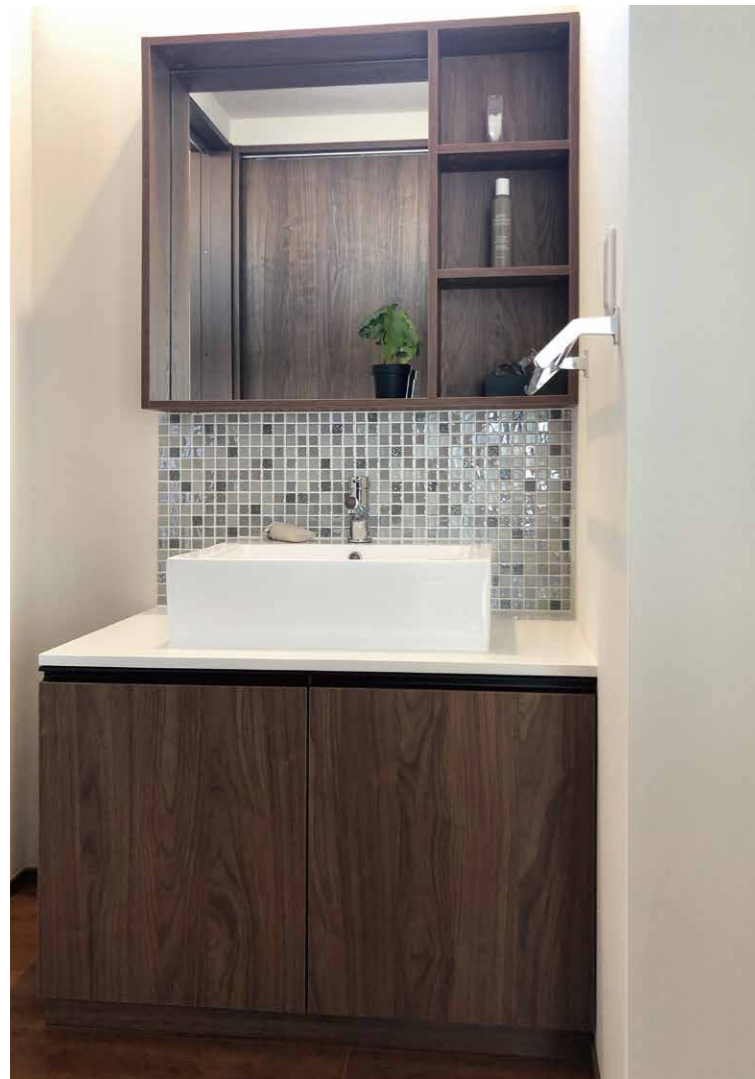




PROJECTS REFERENCES
PROJECTS IN OCEANIA

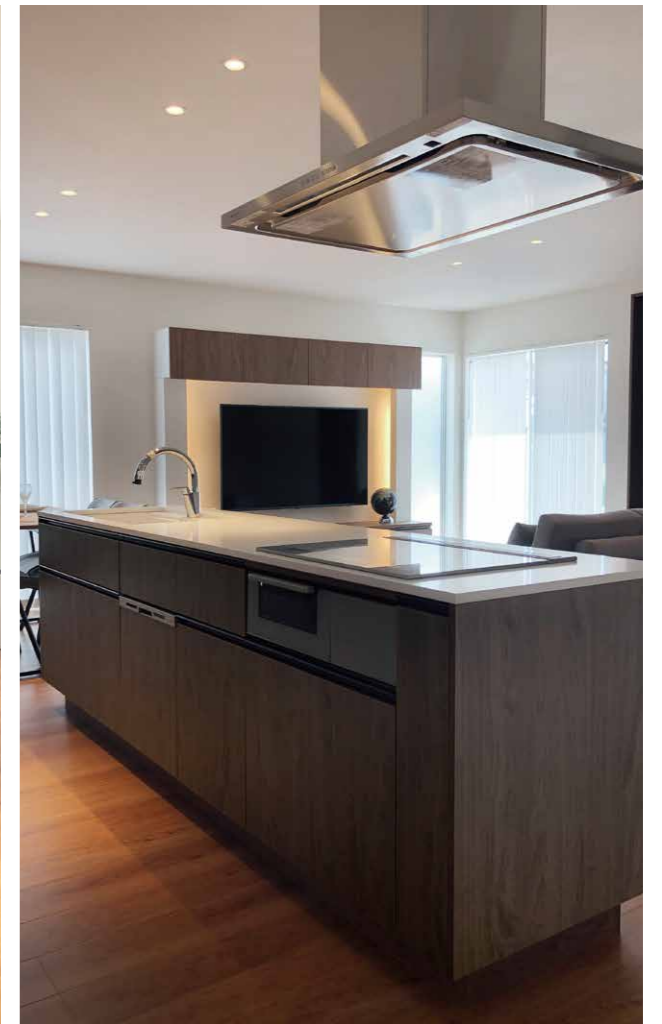
- Location
Australia
- Year
2023





PROJECTS REFERENCES
PROJECTS IN ASIA

- Location
Japan
- Year
2023

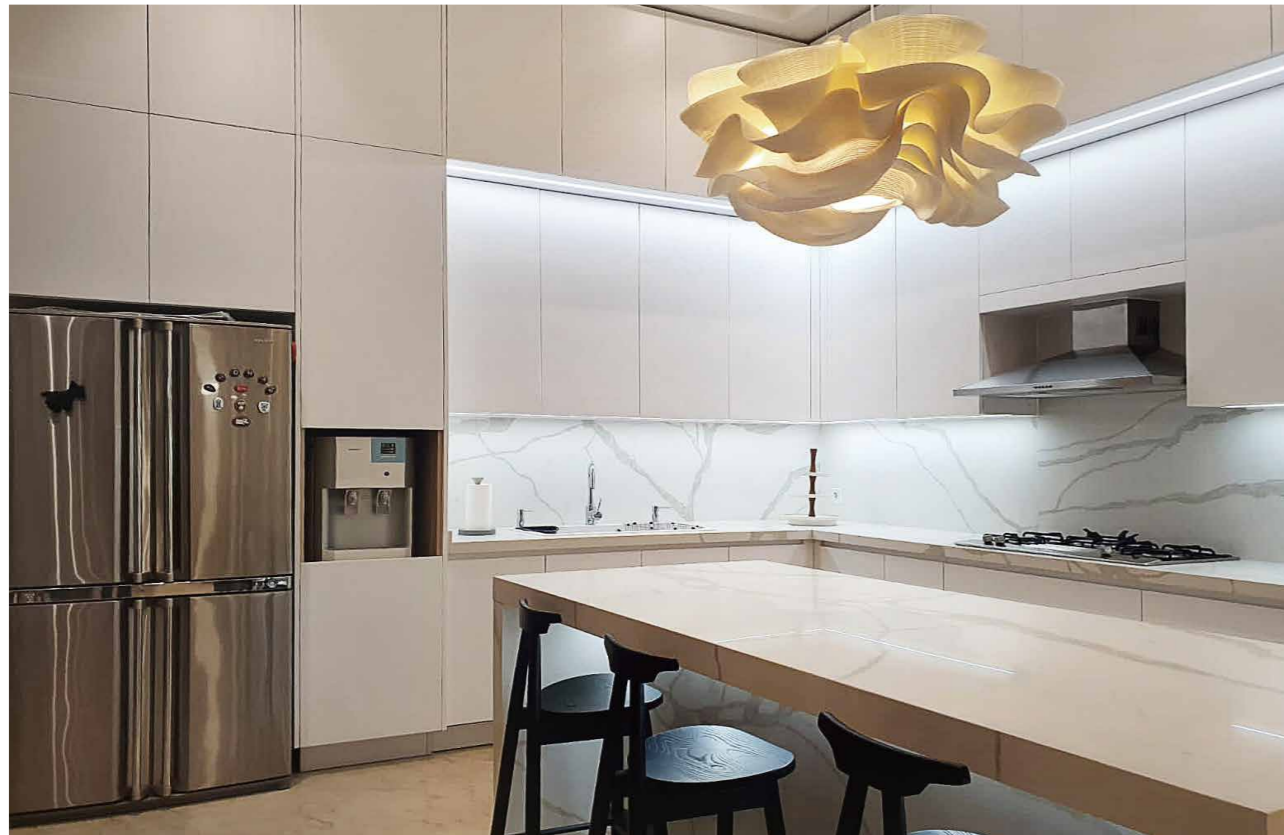




PROJECTS REFERENCES
PROJECTS IN ASIA

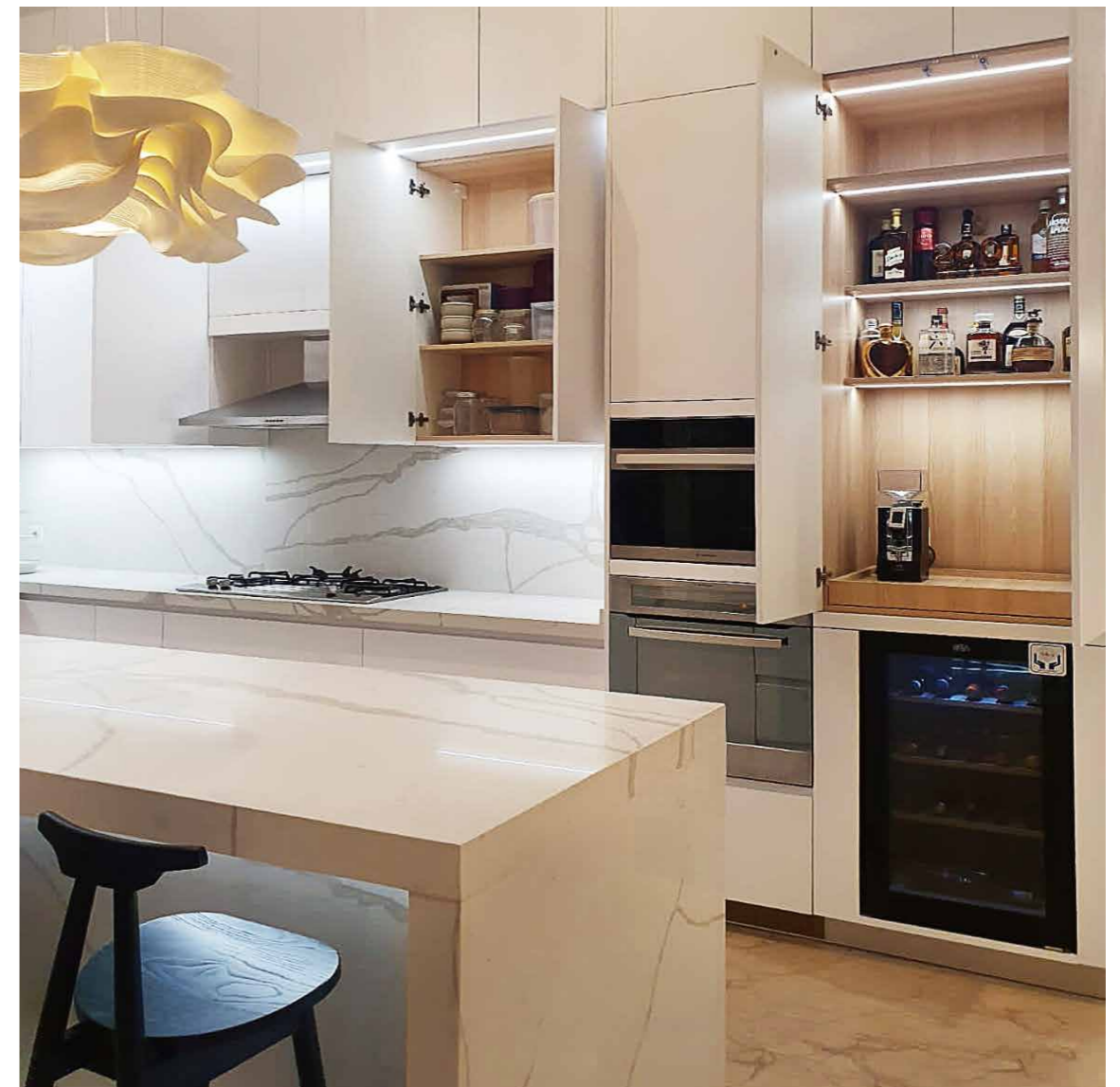
- Location
Indonesia
- Year
2023





PROJECTS REFERENCES
PROJECTS IN ASIA

■ Location ■ Year
Indonesia 2023





PROJECTS REFERENCES
PROJECTS IN ASIA

■ Location
Phuket, Thailand

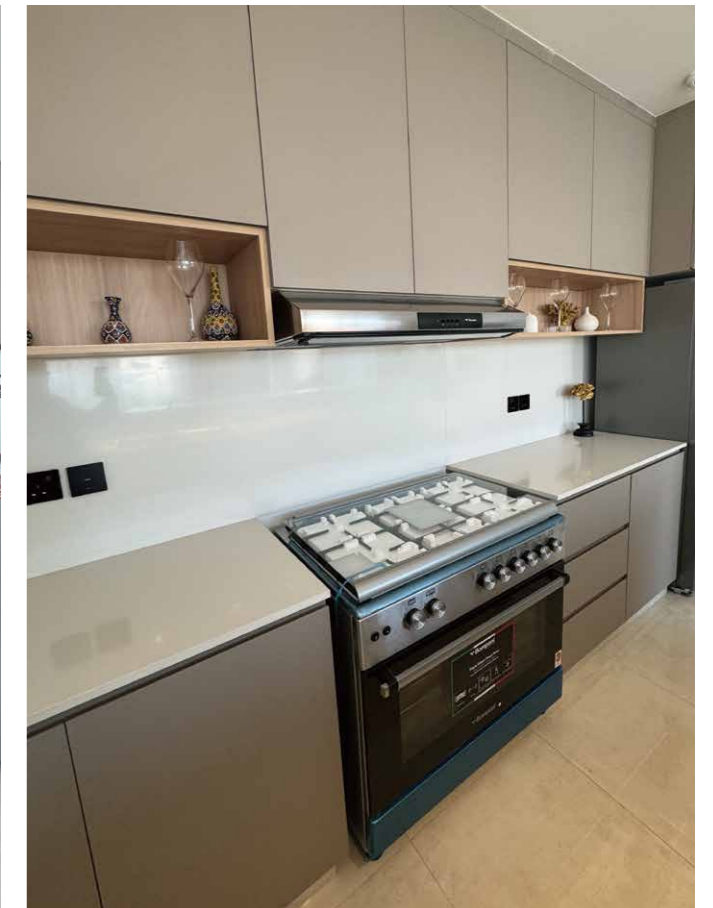
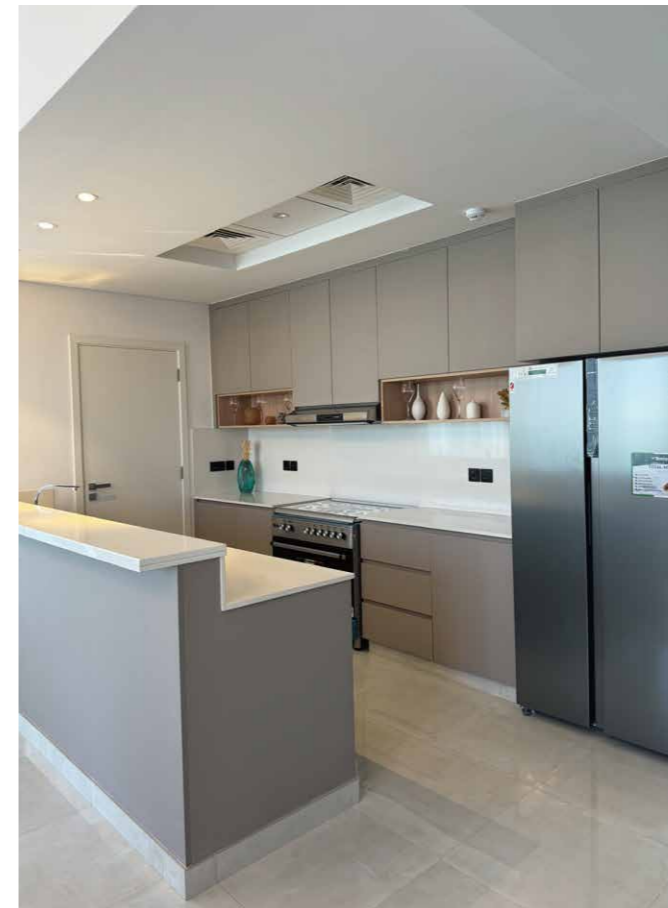
■ Year
2023



PROJECTS REFERENCES

PROJECTS IN MIDDLE EAST

- Location
Dubai, UAE
- Year
2025





PROJECTS REFERENCES

PROJECTS IN MIDDLE EAST

- Location
Dubai
- Year
2023





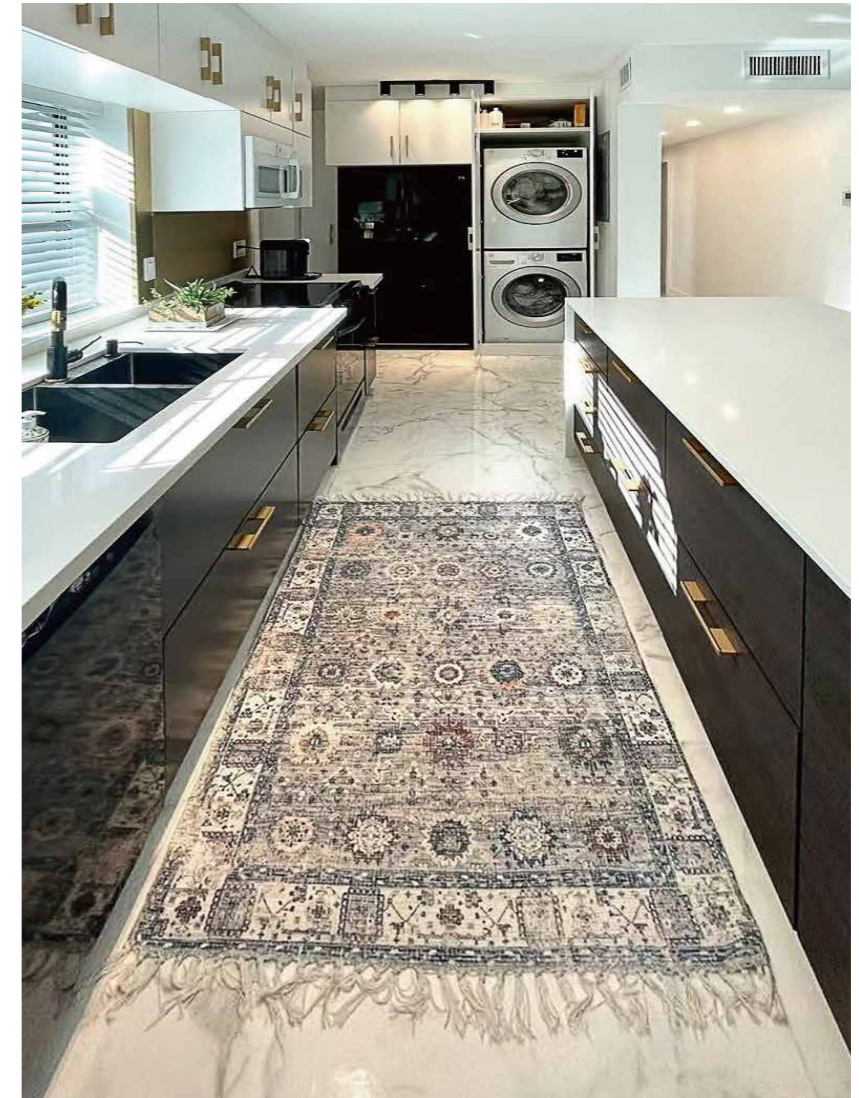
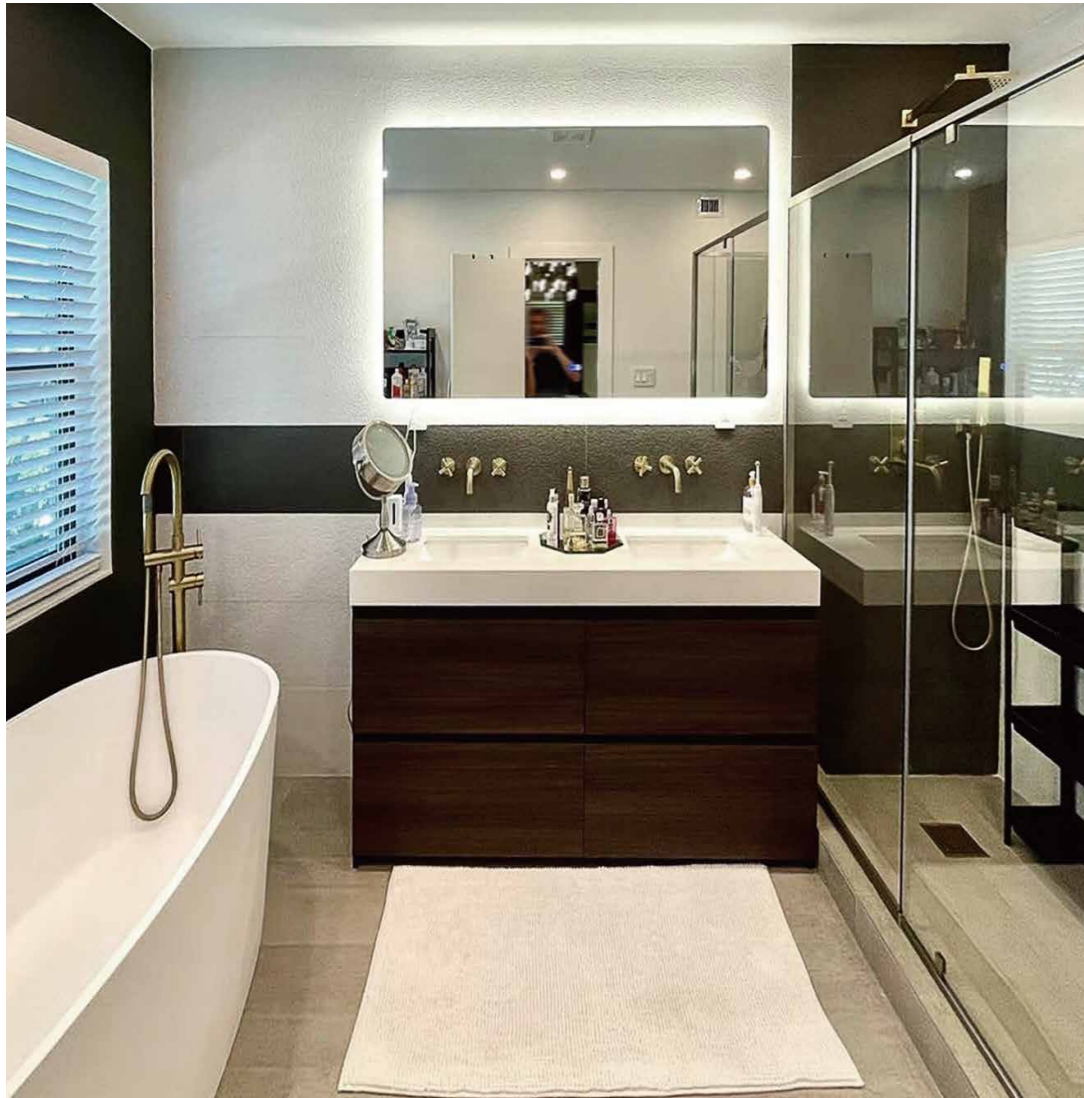
PROJECTS REFERENCES

PROJECTS IN MIDDLE EAST

■ Location ■ Year
Dubai 2022



PROJECTS IN NORTH AMERICA



PROJECTS REFERENCES

PROJECTS IN NORTH AMERICA

■ Location

USA

■ Year

2022



PROJECTS REFERENCES

PROJECTS IN NORTH AMERICA



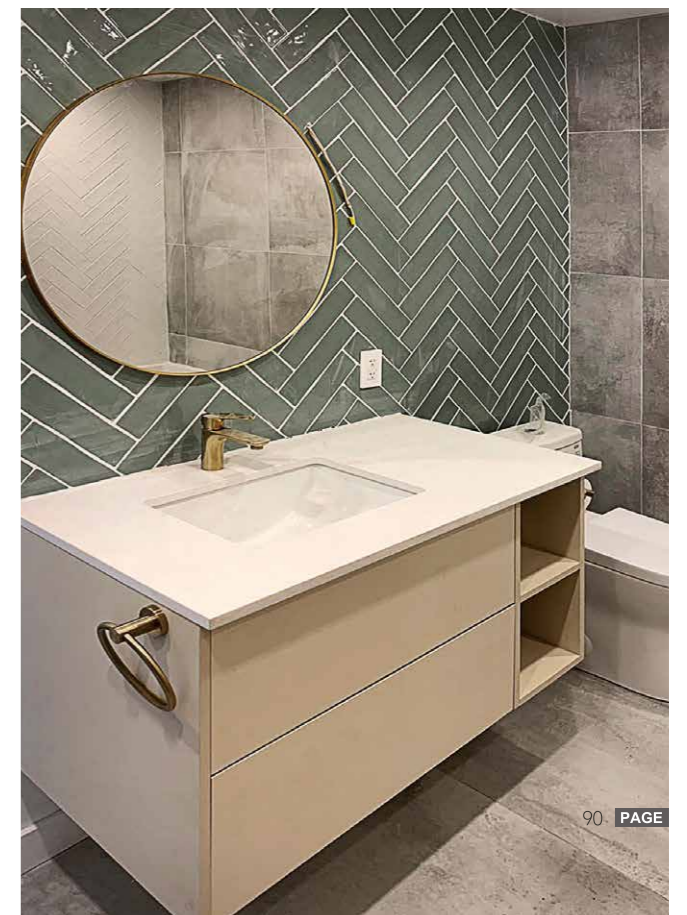
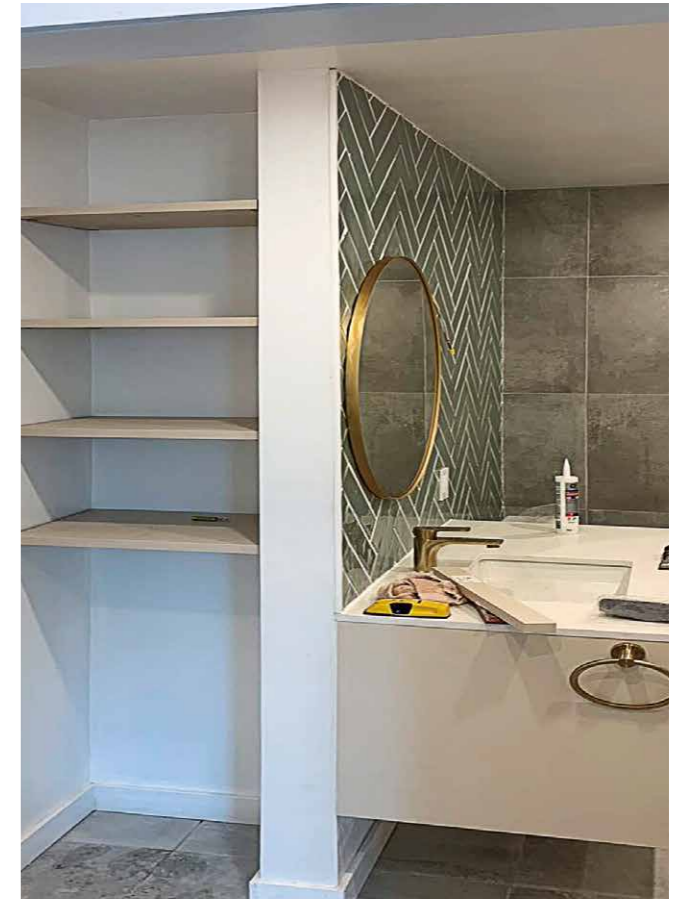
- Location
USA
- Year
2024



PROJECTS IN NORTH AMERICA

- Location ■ Year
- Canada 2023

PROJECTS IN NORTH AMERICA

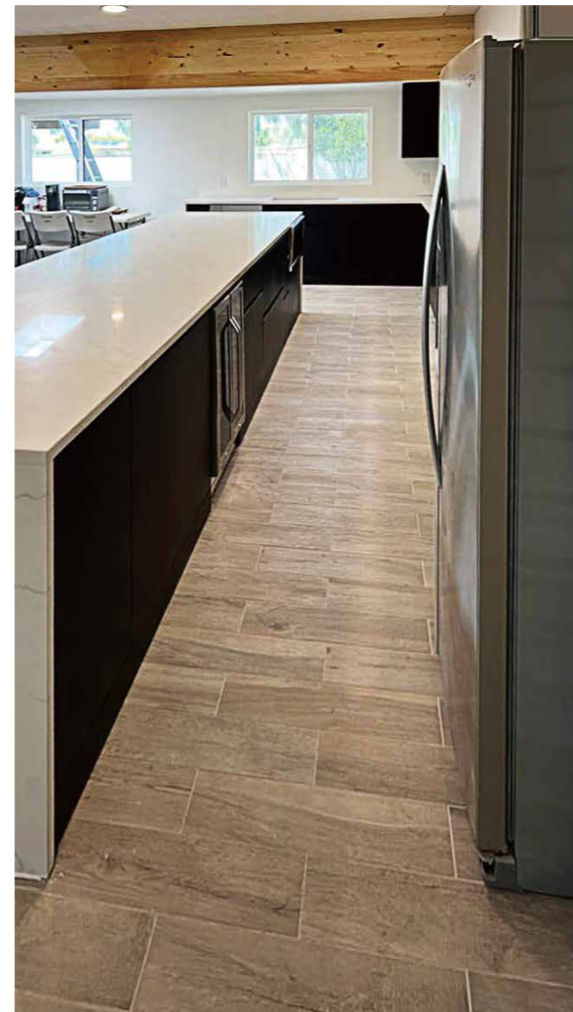




PROJECTS REFERENCES
**PROJECTS IN
NORTH AMERICA**



■ Location ■ Year
USA 2023





PROJECTS REFERENCES
PROJECTS IN NORTH AMERICA

- Location
Canada
- Year
2023

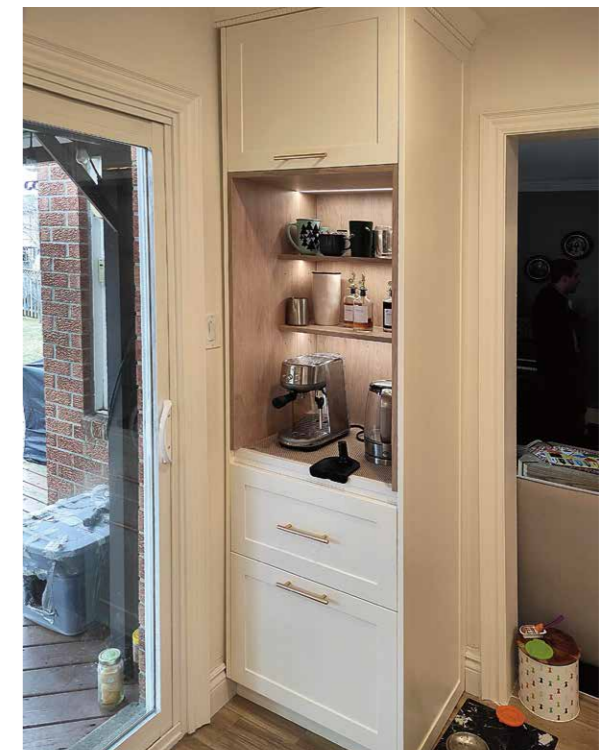




PROJECTS REFERENCES
**PROJECTS IN
NORTH AMERICA**

■ Location
Canada

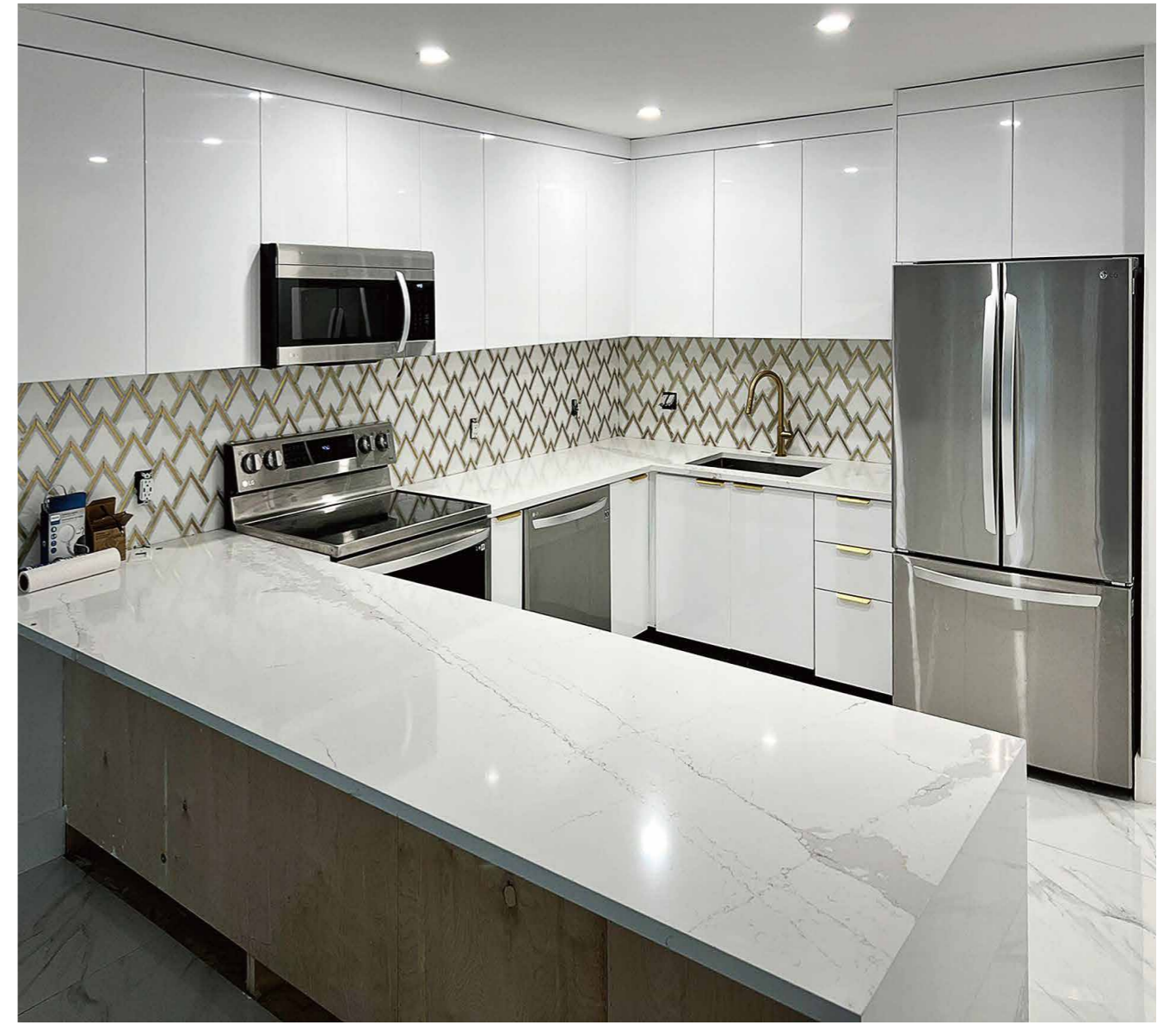
■ Year
2023





PROJECTS REFERENCES
PROJECTS IN NORTH AMERICA

- Location: USA
- Year: 2022



PROJECTS IN LATIN AMERICA



PROJECTS REFERENCES

PROJECTS IN LATIN AMERICA

■ Location
Jamaica

■ Year
2023

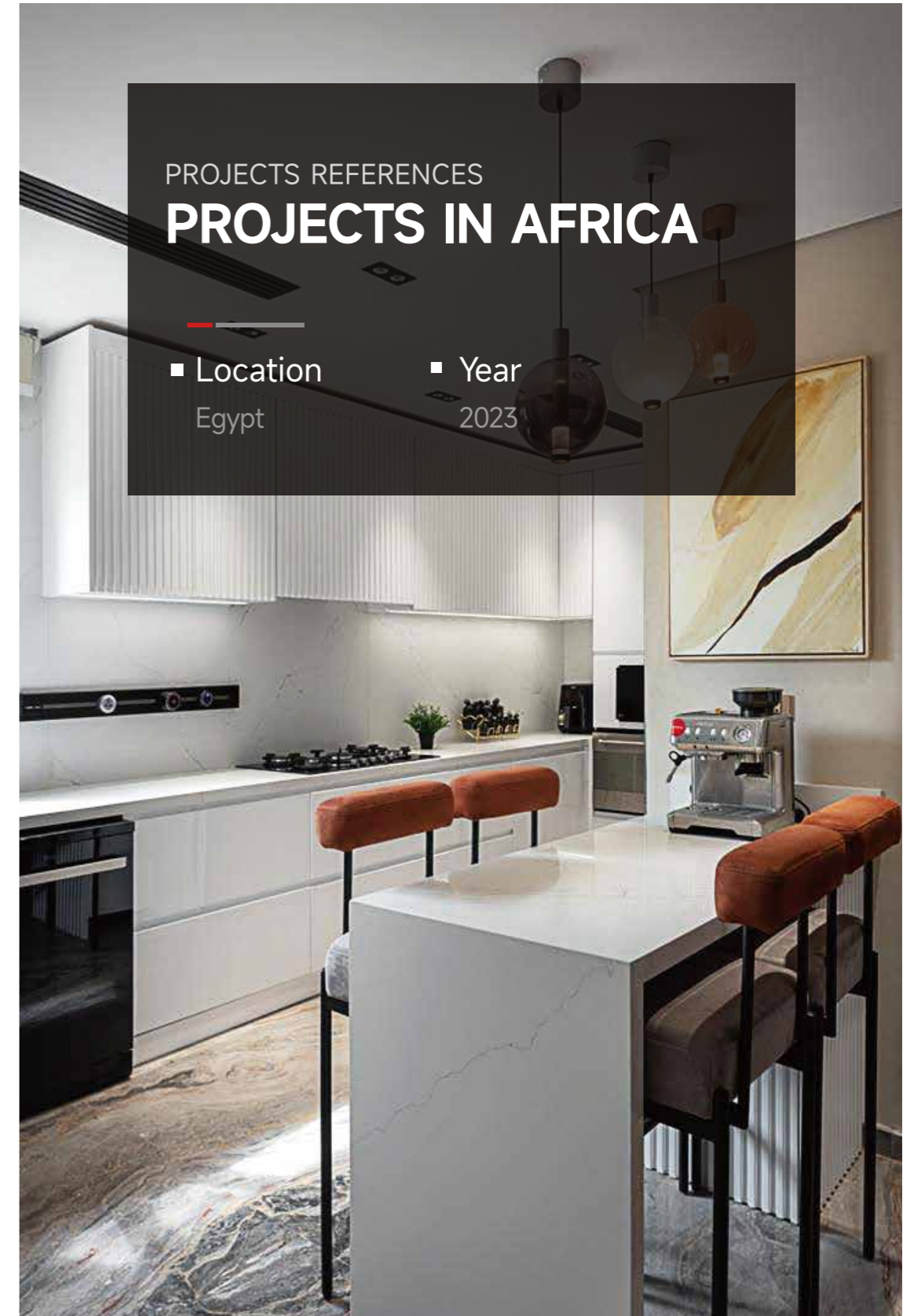


PROJECTS REFERENCES
**PROJECTS IN
LATIN AMERICA**



- Location
Chile
- Year
2023







PROJECTS REFERENCES
PROJECTS IN AFRICA

- Location
Zambia
- Year
2023





PROJECTS REFERENCES

PROJECTS IN EUROPE

■ Location
UK

■ Year
2023

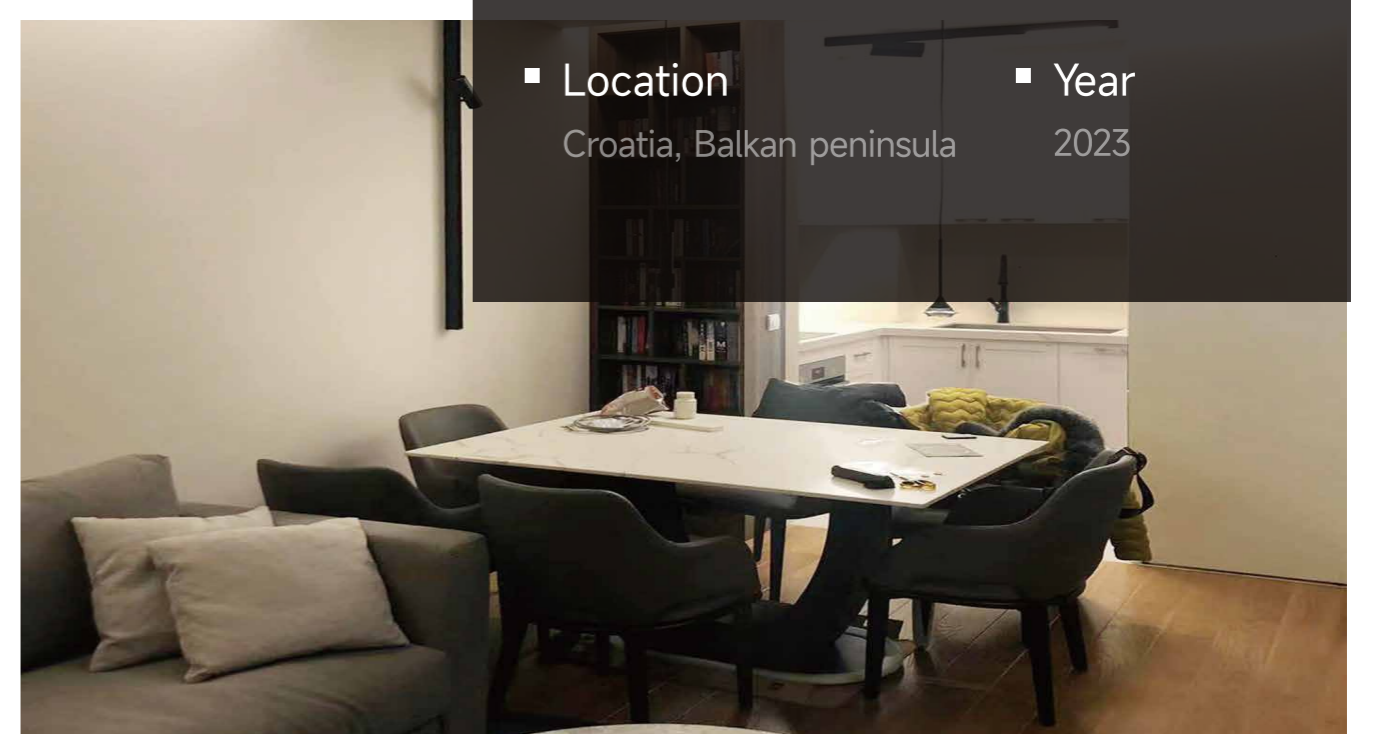


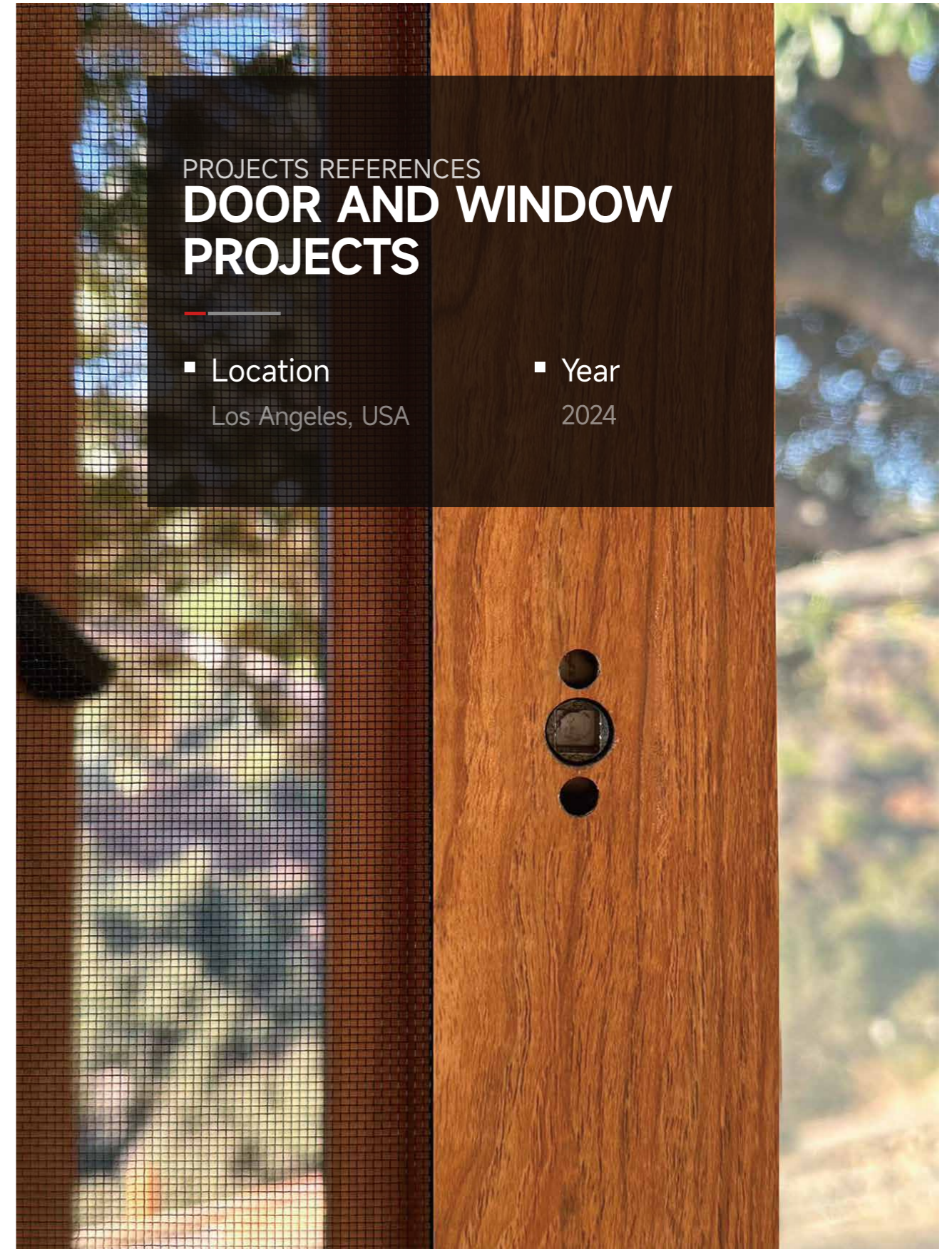
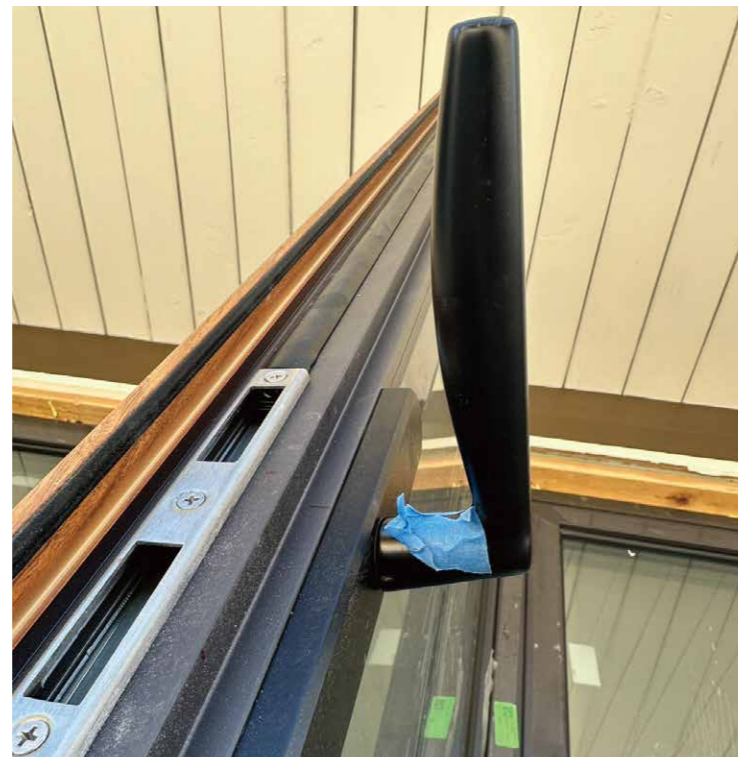


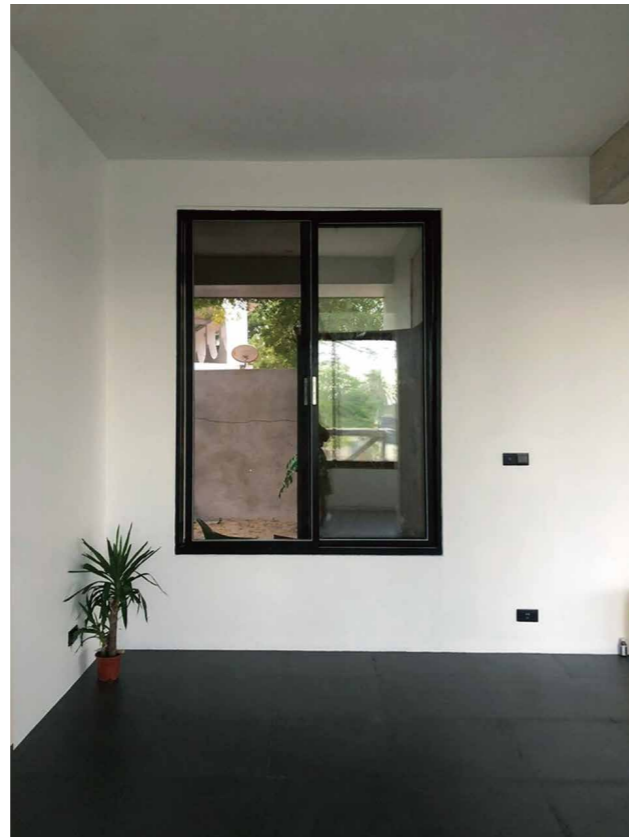
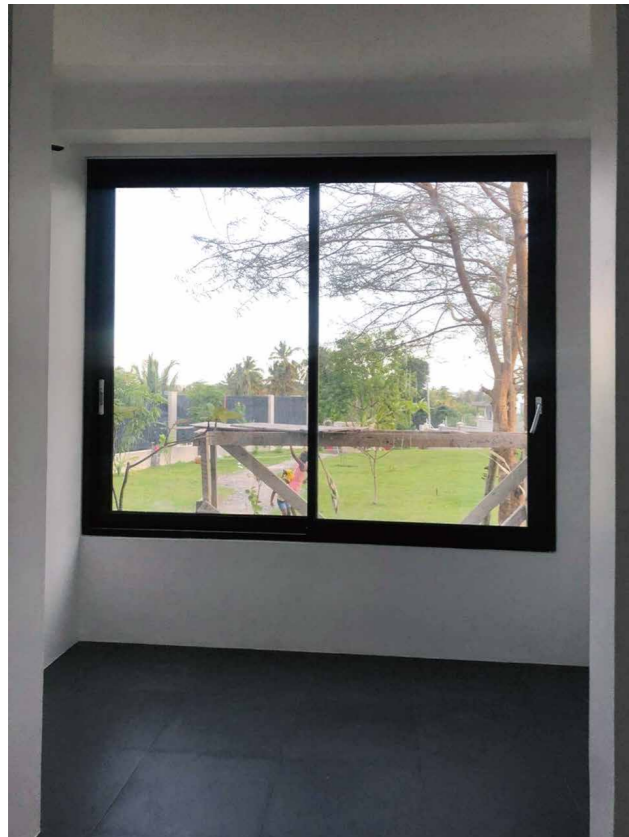
PROJECTS REFERENCES
PROJECTS IN EUROPE

▪ Location
Croatia, Balkan peninsula

▪ Year
2023



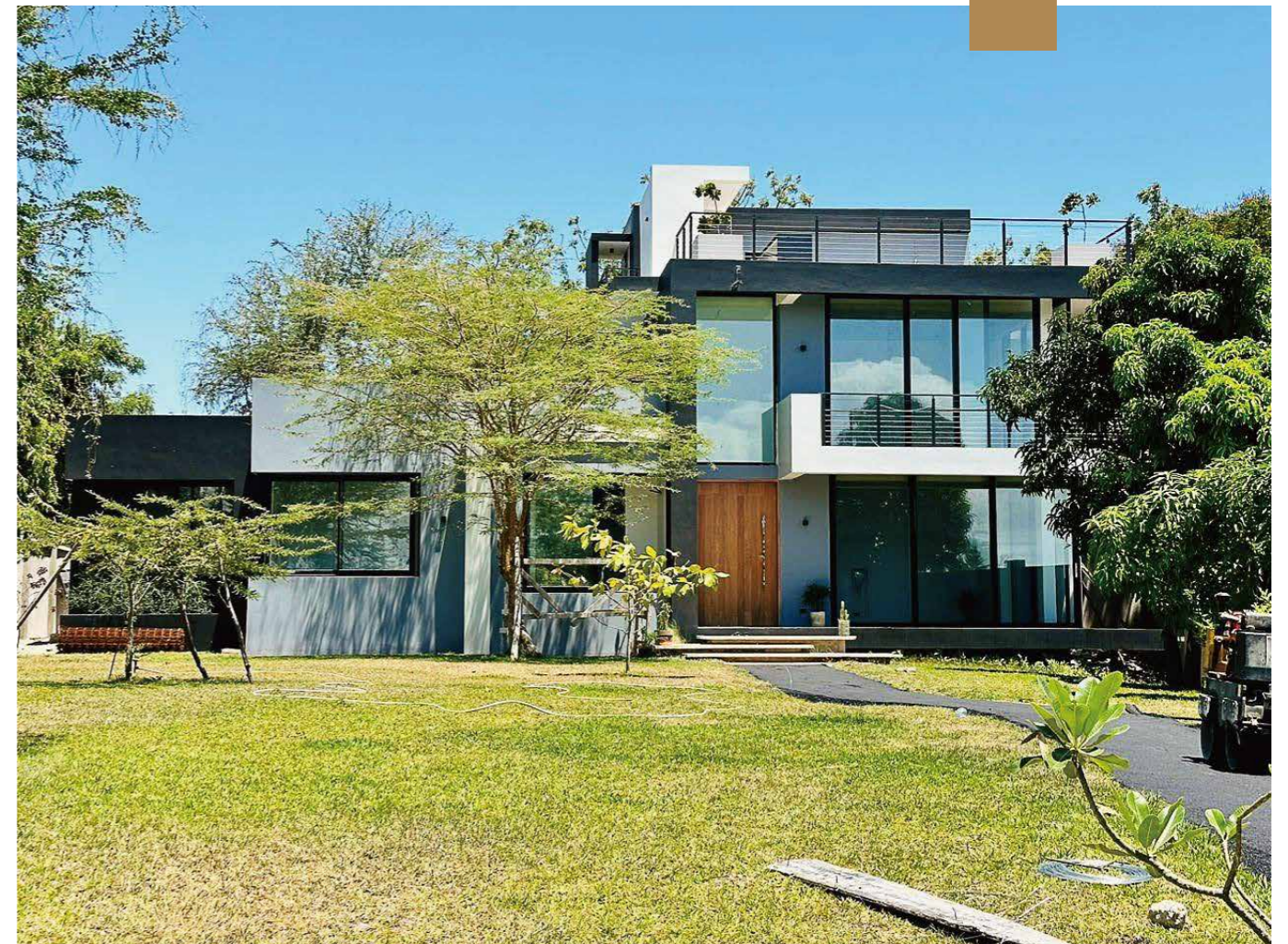


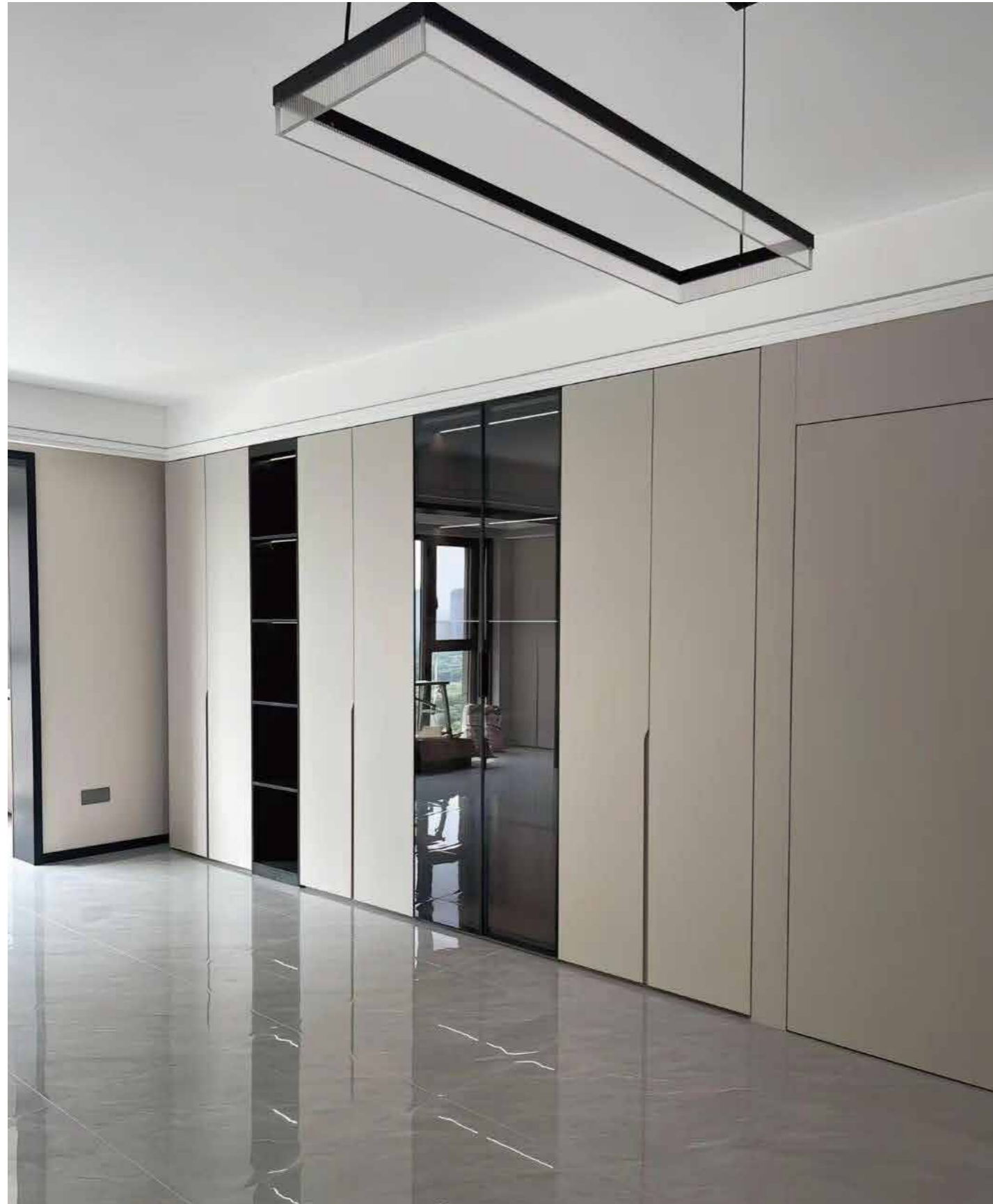


PROJECTS REFERENCES

DOOR AND WINDOW PROJECTS

- Location
Tanzania
- Year
2023





PROJECTS REFERENCES

INTERIOR DOORS PROJECTS

■ Location
HK

■ Year
2023



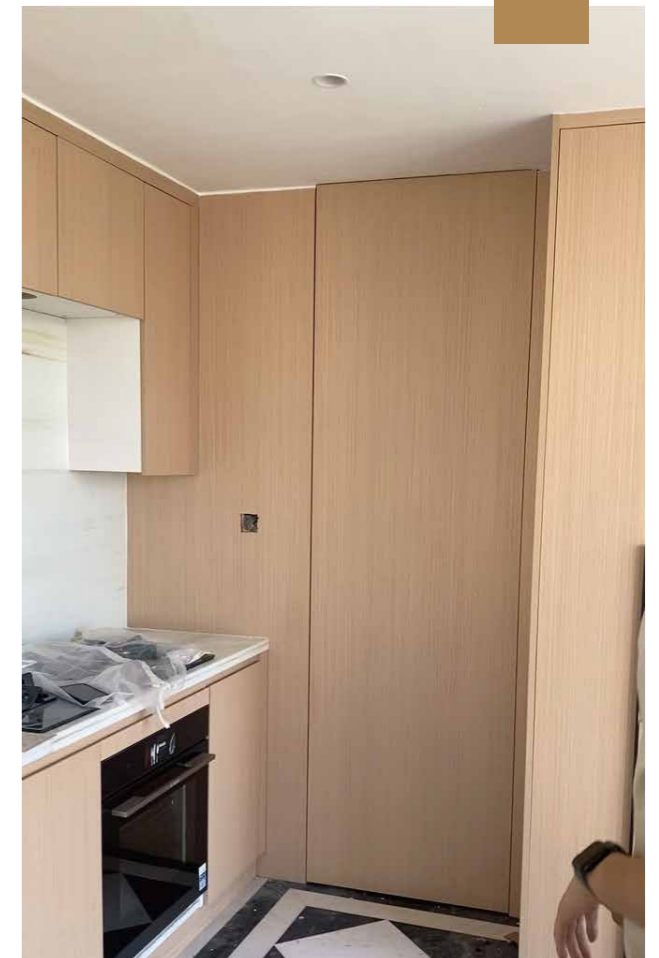


PROJECTS REFERENCES

INTERIOR DOORS PROJECTS

■ Location
Indonesia

■ Year
2023



GLOBAL PARTNERS



blum 百隆

Hettich

HOMAG

Unihopper 库博®

Jowat 胶王
Adhesives

悍高 HIGOLD

opk 欧派克
绿色欧派克·滑动门系统专家

ilin 宜琳照明
ighting

NUOMI 诺米

SALICE



汇龙涂料
专业 成就 价值

酷太 COOKTIME
厨房收纳系统

DTC 东泰
国际品质标杆



HUALI 华立股份
股票代码:603038.SH

YALIS 雅丽斯®
极简空间艺术门锁

HOPO®
好博窗控技术

BOGO 宝高
用心做好门窗五金

XYG®
信义玻璃

SIEGENIA®
brings spaces to life

Roto
Window & Door
Technology

KIN LONG
For Better Living

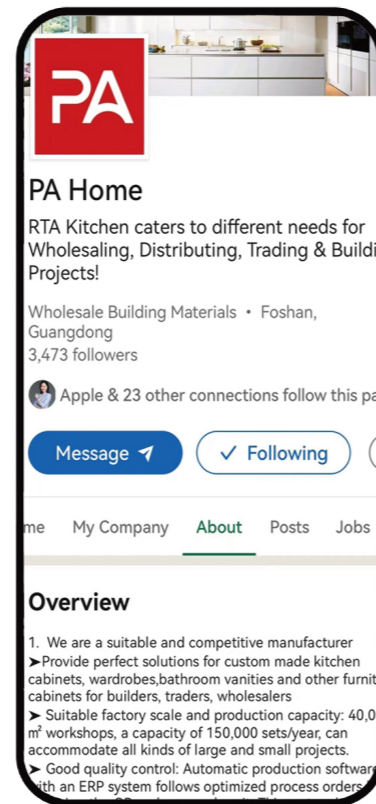
中旗新材
SINOSTONE
-- 001212 --

FOLLOW US

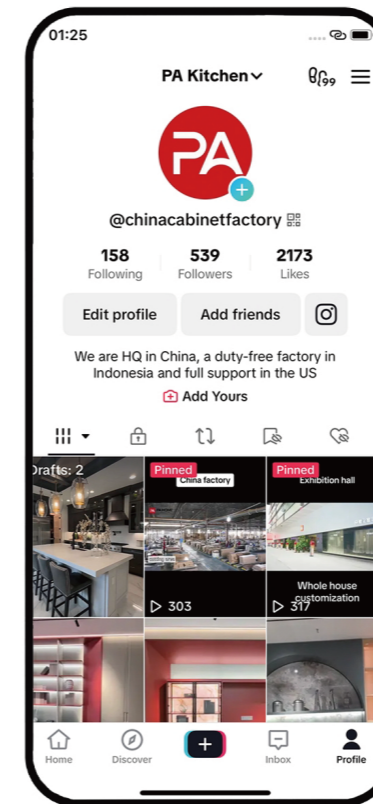
Instagram



LinkedIn



TikTok



Facebook

