



KITCHEN & FURNITURE

# Guangdong Baishan Furniture Co., Ltd.

TO BE ONE OF WORLD-KNOWN BRANDS IN CUSTOMIZED FURNITURE



Top Ten China Export Brands



Top Ten China Whole-House Custom Furniture Brands



Top Ten China Cabinetry Brands



Brand on the list "Global Figures"



# PA

KITCHEN & FURNITURE



Top Ten China Export Brands



Top Ten China Whole-House Custom Furniture Brands



Top Ten China Cabinetry Brands



Brand on the list "Global Figures"

**CCTV 1** **CCTV 2** **CCTV 4** **CCTV 7** **CCTV 12** 展播品牌

## Quality Assurance



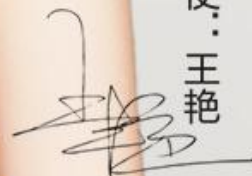
WHERE THERE IS HOME, THERE IS PA KITCHEN

# QUALITY LIFE STARTS WITH LOVE

WANG YAN, BRAND AMBASSADOR



品爱形象大使·王艳





WHERE THERE IS HOME, THERE IS PA KITCHEN

**BRAND STRENGTH-NATIONAL BRAND**

# Top Ten Cabinetry Brands

Leading technology, winning by quality





WHERE THERE IS HOME, THERE IS PA KITCHEN

# QUALITY CONTROLLING SYSTEM



The biggest challenge for furniture customization is quality control. Since each job is customized, whenever mistakes like wrong holes, missing pieces, unclear labels, misleading drawings happen, the progress of installation at site will be messed and delayed, and eventually damage the schedule of inspection and completion. In order to get rid of the problems at site, PA has been persisting on removing the mistakes from the beginning, which is making sure the quality during production. To get the full solution to control the quality of every procedure, PA spent millions to build up the full system for connecting design and production data. This system, with the name Intelligent Design and Production System (IDPI system in short) manages all the data in the workflow and controls the outcome of manufacture. This is an efficient network covering every step and every position during production and making the workflow smooth.

Besides that, PA quality controlling system is detailed below 4 parts:

01

Homag production devices from German are brought in to make sure the precision of manufacturing.

02

IDPI system is a intelligent and automatic system that reduces the error rate by having less manual labor involved.

03

ERP system manages all steps from sales order confirmation to order fulfillment. The order status is visible and traceable during the whole process on ERP.

04

High standard and strict inspection protocols for supply chain products make sure the final quality of finished products by PA.



KITCHEN & FURNITURE

# Quality Control System

Part 1 - Automatic Production Line



# QUALITY CONTROL SYSTEM

## Part 1-Automatic Production Line

The German Homag flexible production line adopts the three-pronged approach of automation, information and refinement for the product manufacturing process, which ensures the product is best in every link from design, cutting, surface finishing, assembly, transportation, installation to service, It not only saves labor costs, but also improves production efficiency, greatly reduces errors, and better shortens the delivery time.



Numerical control saw



German Homag computerized saw

# QUALITY CONTROL SYSTEM

## Part 1-Automatic Production Line 4.0 Smart Production Base

PA KITCHEN is fully practicing Automatic Industry 4.0, and bringing German quality and intelligent products to more families.



Automatic edge sealing machine





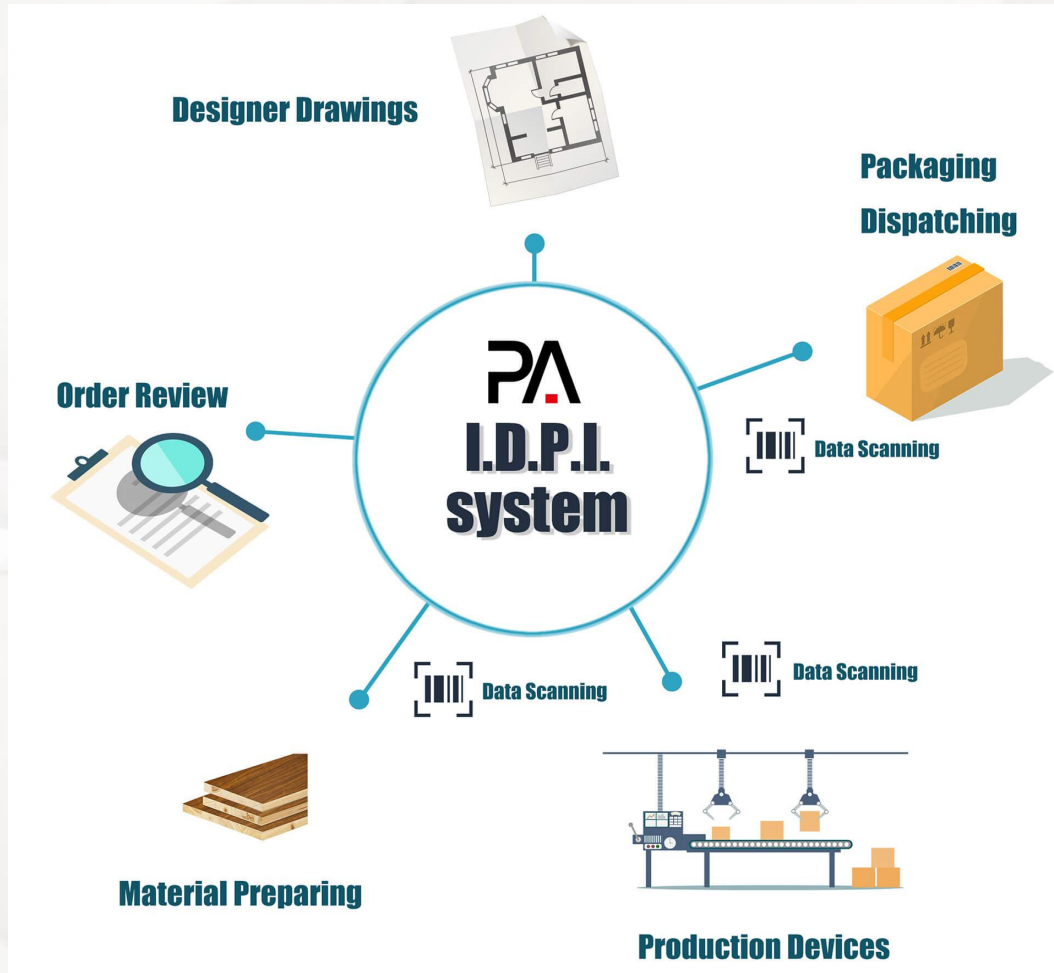
KITCHEN & FURNITURE

# Quality Control System

Part 2-Intelligent Design and Production System

# QUALITY CONTROL SYSTEM

## Part 2-Intelligent Design and Production System



We spend more than millions to develop the Intelligent Design and Production System (IDPI system in short) , which integrating design, production and quality control, is a major guarantee for PA to maintain its comprehensive competitiveness. The data on design and production can be shared and used in one system:

- 01** Designer upload the design drawing data package to the system;
- 02** The system will translate the drawing data automatically to production data and send to each steps of production. In this way, no more human work involved into the data analysis step and reduce the mistakes made by human.
- 03** Every panel gets its own QR code on , workers only need to scan the QR code , the machines will produce according to the data automatically. No need the workers to consider the directions.
- 04** During the sorting area and packing step, workers only need to scan the QR code, the system will prompt and ensure the sorting is correct ,make sure every panel of whole project is included.

This system can largely reduce the labor participation and human errors. (The record we had shows that the error rate is less than 0.1% now instead of 5% before because of this beautiful system)

What does any of this mean to you? PA Kitchens is a leading Kitchen Cabinets Manufacturer because we use technology to keep our prices low, our product quality high, and our manufacturing times short. We stake our reputation on providing everything you could ask for at competitive prices.



# QUALITY CONTROLLING SYSTEM

## Part 2-Intelligent Design and Production System

### 1.Smart Cutting

Cutting panels is the first step for production. The production data are transferred to each machine computer by the IDPI system, the workers only need to choose the task on the screen and follow the instruction on it. No need to think how to cut. So it could ensure the accuracy for the cutting.

After cutting, there is a label printed out for each panel which mark the data on it, workers only need to scan the QR code on following steps for production, it plays an important role.



# QUALITY CONTROLLING SYSTEM

## Part 2-Intelligent Design and Production System

### 2.Edge banding

Edge banding is the very important process for panel furniture. Almost every customer will see the edge when they select furniture because it is very obvious to identify the quality. The key is the edge banding machine, the PVC edge banding and the glue.

We have 4 edge banding machines, 2 KDT and 1 Nanxing, both are IOP company top brand in China.

The thickness of the PVC edge banding is from 0.6 to 1.2mm. Tree sides are 0.6mm and the outside is 1.2mm. The hot melt glue we are using is German glue called Jowat. It is the best glue in the world. In Chinese translation means the king of the glue and it is. When temperature reaches 177°C (350°F) it will melt which means only when it is in the process of this edge banding machine it will melt and stick, but after it will be very strong never peel off. Also its environmental protection has passed many European tests which means it's very safe with no any poison!





### 3.Intelligent Drilling

The accuracy of holes are crucial for assemble. Any tiny mistake will cause big trouble to the installation at site on time and money.

In PA, the only job our workers need to do for drilling is scan the QR code on each panel, then the computer will show out the hole location which translated from the IDPI system, and then follow the instruction to put the panel in the right direction into the machine, the hole will be drilled automatically.

If there is any mistakes happen from cutting process, the system will recognize as well. Like when you put the panel inside, if the size doesn't match the system data, it could also clarify and alert worker to check.

# QUALITY CONTROLLING SYSTEM

## Part 2-Intelligent Design and Production System

### 4. Smart Sorting & Inspecting

PA intelligent sorting system receives and identifies signal data and locates materials in different channels. The computer analyzes the data and checks the accuracy, the screen will show both the number of piece present and absent.

It can prevent the orders proceeding with pieces missing, keeping the whole order in the correct entire number is extremely for the installation workers at site. Sorting is the first step for QC.



### Sorting inspection of board parts

Intelligent production and efficient decision-making



## 5. Quality Inspection Procedure

After **Smart Sorting**, PA will have secure quality inspection. During this process, our skilled masters will cross check with the drawing again. Attention is paid to the details like the panel measurement, edge banding, panel color, drills position etc., which will be significant to avoid mistakes and helpful for our clients to receive correct items before packing. Vacuuming and cleaning will be done during this process in order to keep it dust-free when you unwrap PA products.



# QUALITY CONTROLLING SYSTEM

## Part 2-Intelligent Design and Production System

### 6. Quality Inspection Procedure

PA quality inspection on product details to reduce errors for customers







# QUALITY CONTROLLING SYSTEM

## Part 2-Intelligent Design and Production System

### 7. Packing-1

Over the past decades, PA Kitchen has been dedicated to providing safe and secure package for oversea delivery. With the help of IDPI system, **PA is able to scan each panel's QR code before packing to make sure all the panels are collected and not missing out.**

Besides, the system can detect the correct panel that belongs to the matching order, thus ensuring our clients are getting what they ordered after long time waiting on delivery.



## 7. Packing -2

Every piece of panel will be scanned to make sure correct quantity. Scanning the QR code will generate all the information of each panel in the computer system to ensure all the panels belong the right order. This will be of great significance to avoid mistakes like missing pieces, messing up other orders' panels etc.



## 7.Packing-flat packing-3

PA Kitchen offers secure flat packing to protect products from breaking during delivery. Each package will have 4 strong paper corners to keep the edge safe. Meantime we will use foam to fill in the gap so that panels will not crush themselves during handling and movements on shipping. After scanning the QR code of each panel to make sure no panel is missing, we will proceed to packing and seal firmly. In this way, it will reduce the damage rate as much as possible.



# QUALITY CONTROLLING SYSTEM

## Part 2-Intelligent Design and Production System

### 7.Packing-assembling packing-4

PA Kitchen offers secure pre-assemble packing service to customers in need. We will assemble the cabinet and wrap it up with thick paper firmly along with the shape of the cabinet. There will be 8 strong paper corner protection to avoid it from damage. Once the general packing is finished, we will wrap several layers of water-proof PVC film on the outside. This will be beneficial and avoid the cabinet from getting wet easily.





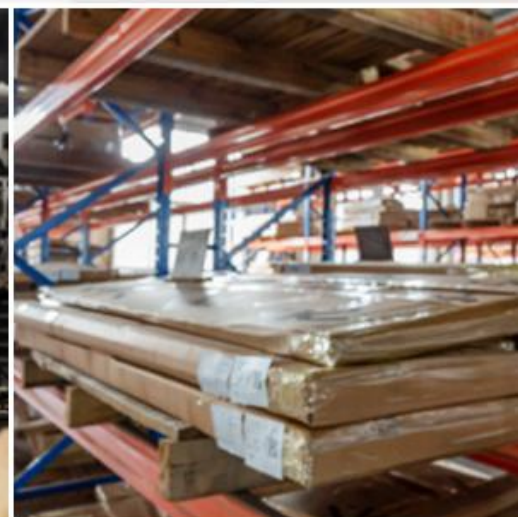
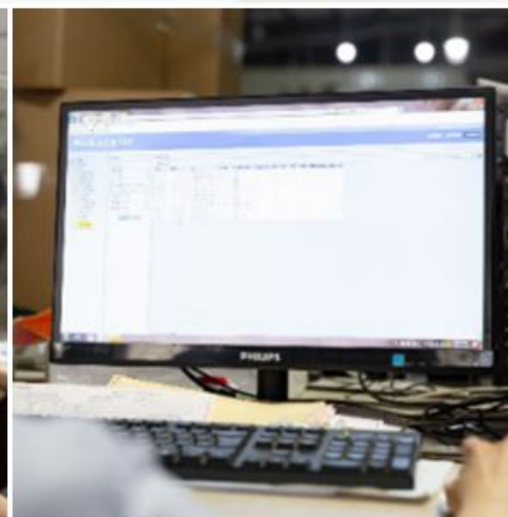
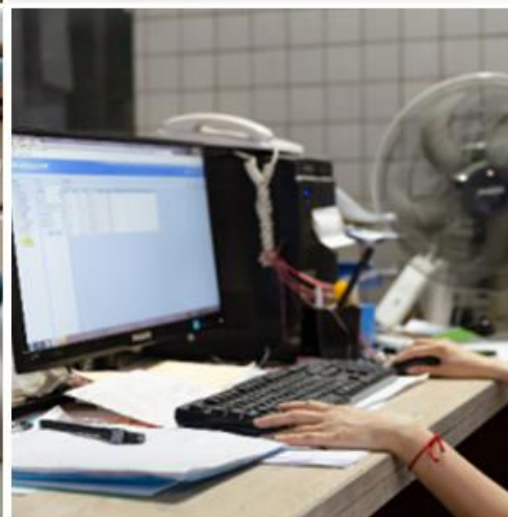
## 8. Warehouse Storage-1

Effective inventory highlights high-quality warehousing and powerful equipment configuration of PA KITCHEN. PA Kitchen have a complete and well-run warehouse system to keep everything in order. We will see in the following pages of how we apply IDPI system to help with the warehouse management.

## 8. Warehouse Storage-2

Once production is finished, we will move all packages to warehouse. At this stage, PA warehouse keeper will scan the QR code on every single package to confirm if the total quantity is correct. This will help our clients to avoid after sale trouble like missing packages and save their time and money to fix the problem.

After keeper confirms the quantity, we will place it on the warehouse shelves. There are QR code to represent the location of each order, which can help us track client order's location clearly without making mistakes. This can guarantee that client is getting the correct items.





### 8. Warehouse Storage-3

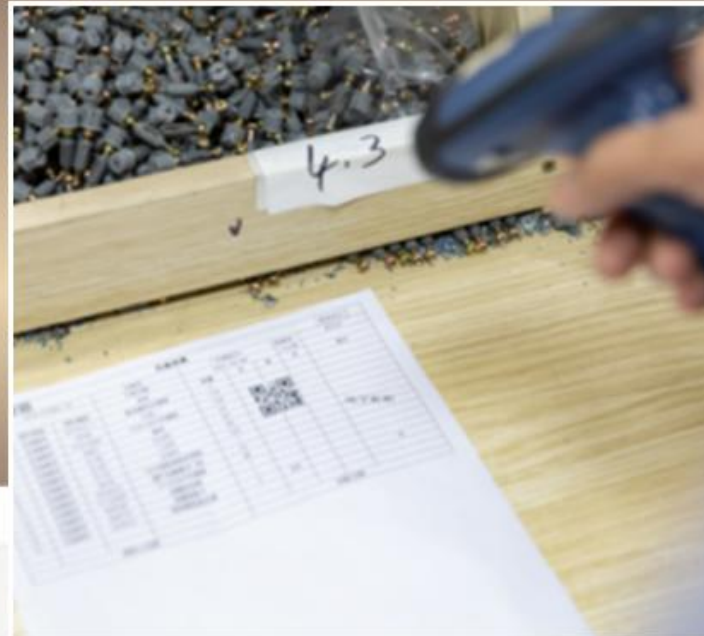
In warehouse, PA will prepare for weight and volume estimation in order to make delivery plan. Documentary will stick labels on each package so that client can easily identify where it belongs. Meanwhile warehouse keep will calculate and check total packages quantity and label again to make sure everything is correct before removing internal use Chinese label and only keep English label. 3 days before loading the container, keep will scan and unload all the packages in loading area so that we can start loading immediately to enhance efficiency.

# QUALITY CONTROLLING SYSTEM

## Part 2-Intelligent Design and Production System

### 9. Hardware sorting system

Workers here scan the QR code, the system will tell the types and quantity of each hardware and light up before the screen, and they pick up the hardware accordingly and place on the table for a final scan and photograph for checking. The ERP will record all the original package data to make sure everything is correct and traceable. We could track easily. No miss or pick the wrong one because all the data are from the IDPI system, no man interrupt.







KITCHEN & FURNITURE

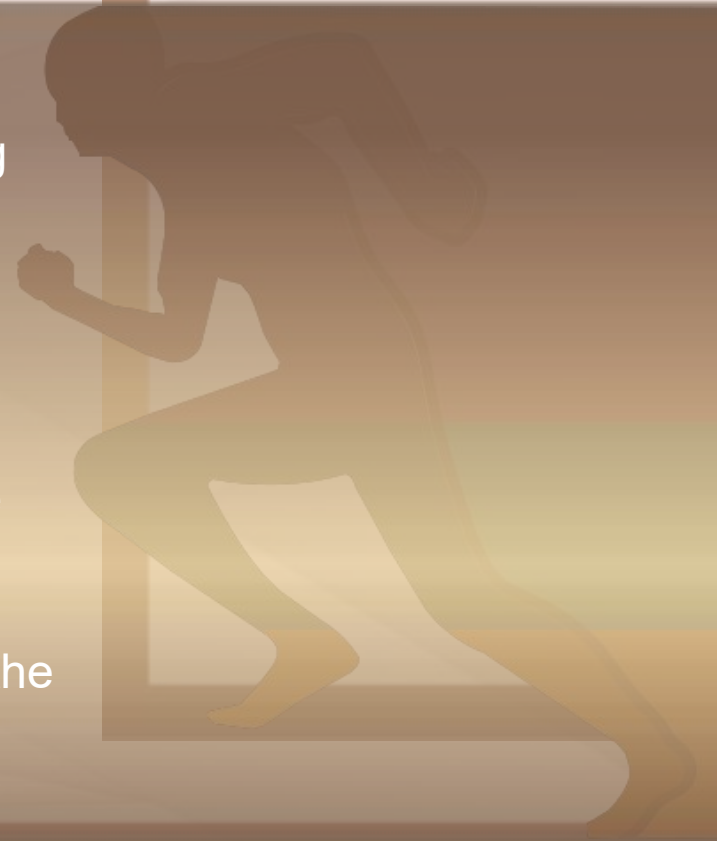
# Quality Control System

Part 3 ERP System

# QUALITY CONTROLLING SYSTEM

## Part 3 ERP System

Through ERP System, PA Furniture sets up standard orchestration to achieve the efficient operation among sales end, order placing, purchasing, manufacturing, stock management, store management, financial management and other processes. Each post and process are under supervision, which assist the management layers to control the entire sales and production. Under the supervision of ERP system, we could ensure the accuracy, timeliness and efficiency during the production process, and enhance PA's management quality and product competitiveness in the round.





KITCHEN & FURNITURE

# Quality Control System

Part 4- Supply chain System

# QUALITY CONTROLLING SYSTEM

## Part 4- Supply chain System

PA develops the advantage of resources integration to enlarge the supply chain, and hope to set up strategic partnership with top raw material suppliers from technique, panel materials to hardware accessories so we could ensure the quality for each small process. For example, we have close partnership with Austria Blum, Germany Homag, Hettich, Rehau, China DTC to pursue each qualified detail.



# PRODUCT ADVANTAGES

## Part 4- Supply chain System



Germany Haumann automatic production line  
 Precise production to ensure stable product quality.



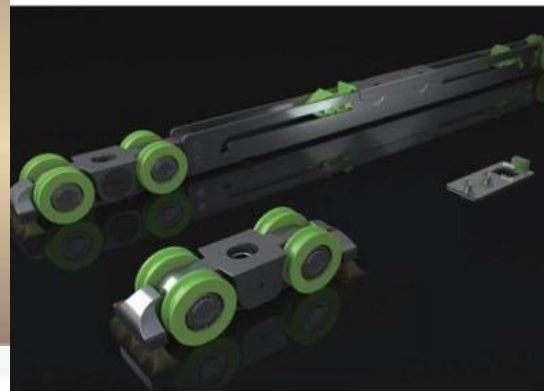
Austria Blum imported hardware

Using Blum door hinges, the service life reaches more than 200,000 times, more than 10 years of use guarantee.



Nomi whole house hardware customization

High quality steel, simple and beautiful shape, very good anti-corrosion performance, long service life.



Opak Group Furniture Pulleys

Smooth, unobstructed, smooth and silent sliding



Examining the BMW baking process

BMW baking paint, paint stability, mirror effect is outstanding, no chipping, strong light for a long time without discoloration.



Super environmental protection E1 grade board

Environmentally friendly panels, safe and healthy

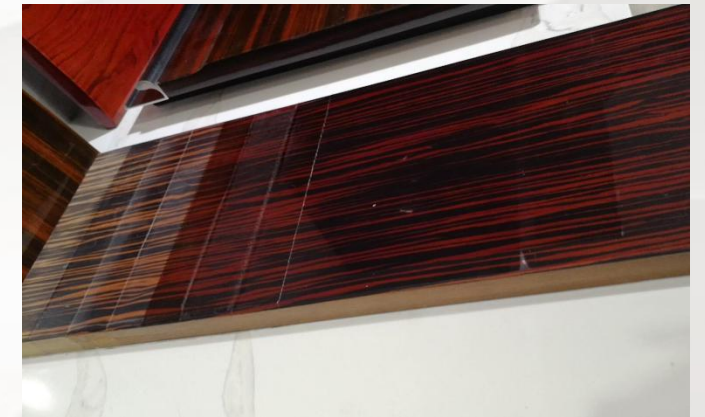
# STRICTLY SELECTED RAW MATERIAL ADVANTAGES OF TOP LACQUER FINISH



The supplier of raw material is selected by strict inspection and quality control protocols. There different levels of material in the market, and their material must meet European standard E0/ ASTM. The material must meet the standards including directional fiber, polymer structure, moisture-proof, compact, high bending strength, low expansion rate, better nail holding force, etc.



Lacquer finish is PA feature item. They make use of U.S. imported platinum finish paint and UV chemical reaction, forming a dense protective film with two-color crystal sealing. The mirror high-gloss effect is obvious, the paint film is rich, non-fading, scratch-resistant, acid and alkali resistant to corrosion. A lacquer painting workshop must be environmental friendly to operate in China and PA operates their own.



Similar as lacquer finish, solid wood veneer BMW baking paint using E1 grade fiberboard technology veneer and the finish is refined over 40 processes. The surface is smooth, delicate and not easy to fade. Its stable performance, mirror effect up to 106 degrees, strong wear resistance, hardness of 4H or more justify its high-end quality. And it is also environmental friendly.



# THANKS

GUANGDONG BAISHAN FURNITURE CO., LTD.  
FOSHAN PA FURNITURE CO., LTD. (PA KITCHEN)

Mobile/Wechat/Whatsapp: +8613889922422

Email: [info@pakitchen.com](mailto:info@pakitchen.com)

Website: [www.pakitchen.com](http://www.pakitchen.com)

China Factory: No.16 Hegui Rd. Nanhai, Foshan, China

Indonesia Factory: No.5 Batusari, Tangerang, Indonesia

Marketing Headquarters: Bld 7, Meiju IBME Center, Foshan, China